



KITCHEL LAKE

TRUMARK HOMES



PLAN 1

3 – 4 Bedrooms • 2.5 – 3.5 Baths • 3-Car Garage
Approx. 2,016 – 2,956 Finished Sq. Ft.

PRELIMINARY



Elevation 1A - Modern Farmhouse



Elevation 1B - Modern Prairie



Elevation 1C - Modern Mountain

Preliminary and subject to change.

970.450.5504 | KitchelLakeSales@trumarkco.com | 1554 Winter Glow Drive, Windsor, CO. 80550 | VIP-KITCHEL.COM

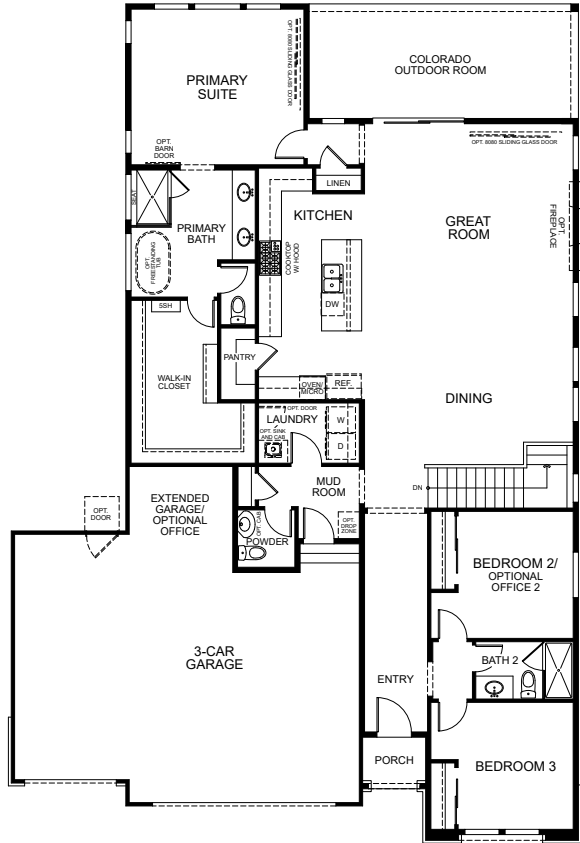
TRUMARK HOMES

All information is for reference only. Prices, taxes and specifications subject to change and should be verified by all potential homebuyers. This is not an offer to sell but is intended for information only. The developer reserves the right to make modifications in materials, specifications, plans, pricing, various fees, designs, scheduling and delivery of homes without prior notice. All dimensions and square footages are approximate. Plan and dimensions may contain minor variations from floor to floor. CA DRE license no. 01877720. 🏠

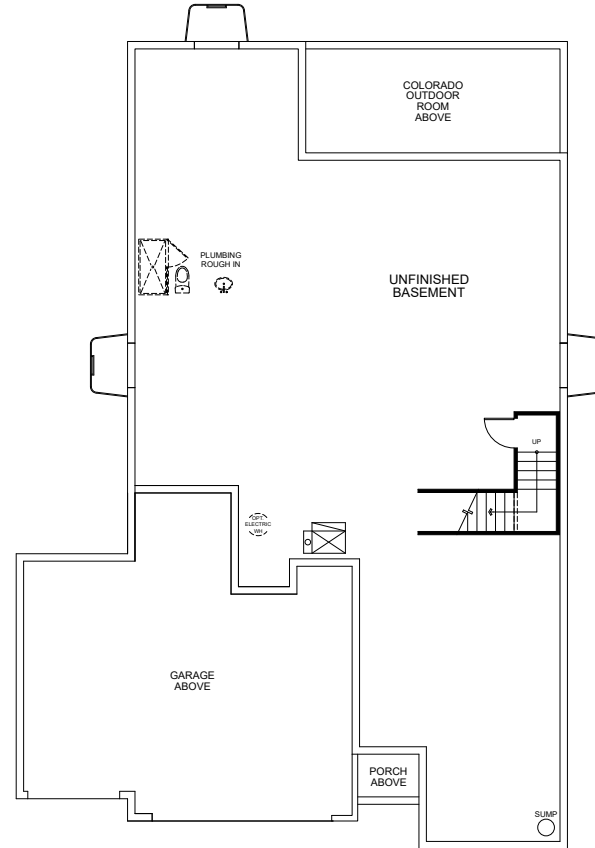
PLAN 1

3 - 4 Bedrooms • 2.5 - 3.5 Baths • 3-Car Garage
 Approx. 2,016 - 2,956 Finished Sq. Ft.

PRELIMINARY



FIRST FLOOR



BASEMENT

Preliminary and subject to change.

970.450.5504 | KitchelLakeSales@trumarkco.com | 1554 Winter Glow Drive, Windsor, CO. 80550 | VIP-KITCHEL.COM

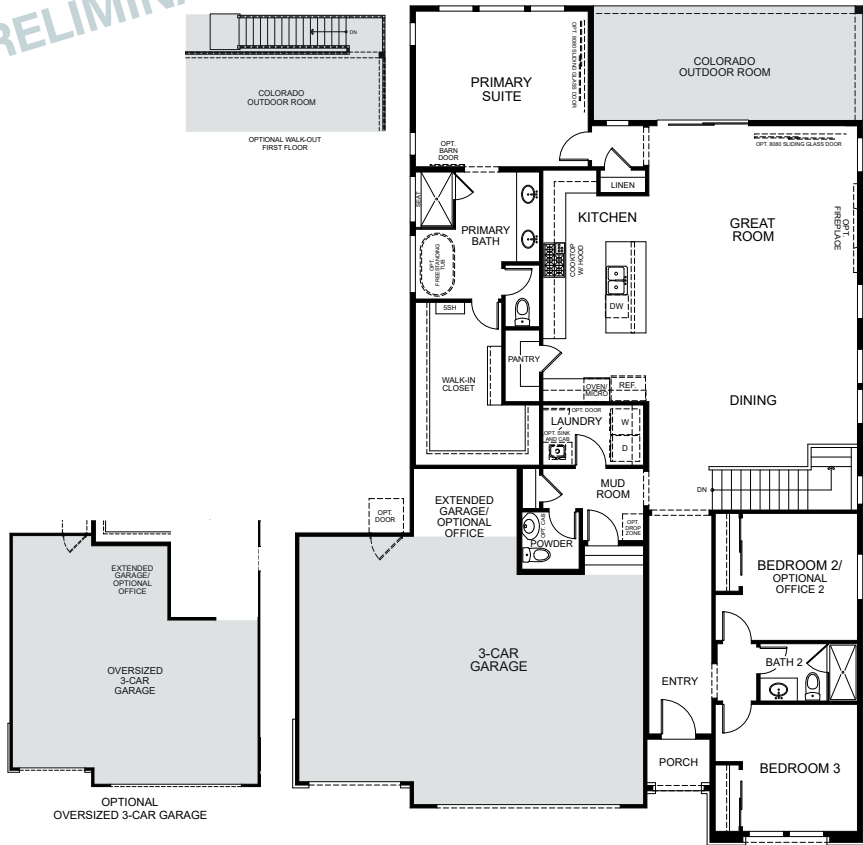
TRUMARK HOMES

All information is for reference only. Prices, taxes and specifications subject to change and should be verified by all potential homebuyers. This is not an offer to sell but is intended for information only. The developer reserves the right to make modifications in materials, specifications, plans, pricing, various fees, designs, scheduling and delivery of homes without prior notice. All dimensions and square footages are approximate. Plan and dimensions may contain minor variations from floor to floor. CA DRE license no. 01877720. 🏠

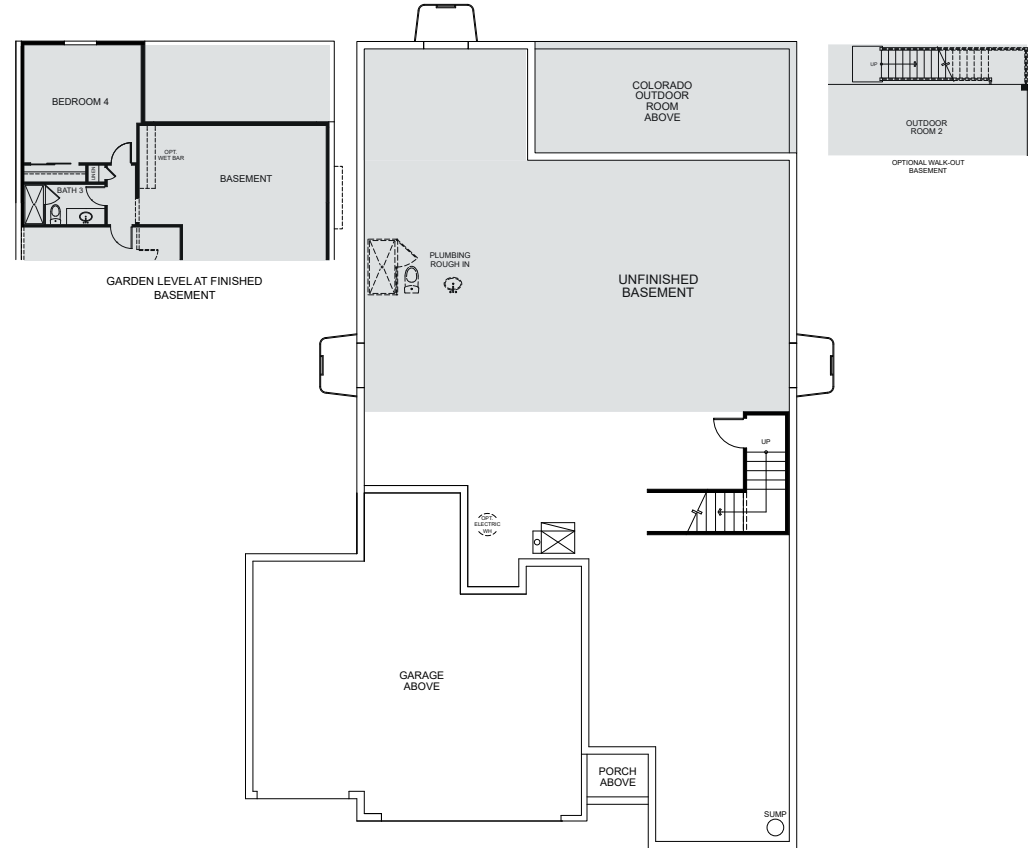
PLAN 1 - OPTIONS

3 - 4 Bedrooms • 2.5 - 3.5 Baths • 3-Car Garage
 Approx. 2,016 - 2,956 Finished Sq. Ft.

PRELIMINARY



FIRST FLOOR



BASEMENT

Preliminary and subject to change.

970.450.5504 | KitchelLakeSales@trumarkco.com | 1554 Winter Glow Drive, Windsor, CO. 80550 | VIP-KITCHEL.COM

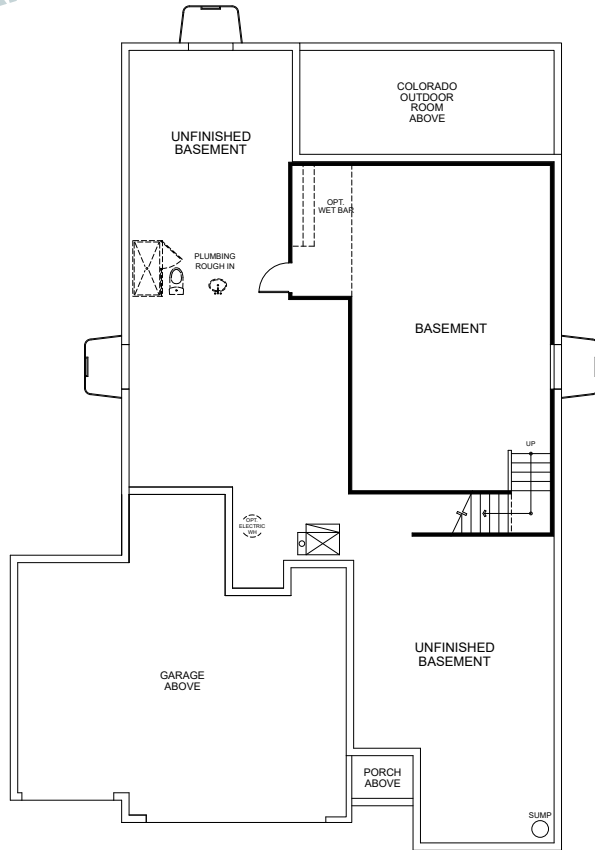
TRUMARK HOMES

All information is for reference only. Prices, taxes and specifications subject to change and should be verified by all potential homebuyers. This is not an offer to sell but is intended for information only. The developer reserves the right to make modifications in materials, specifications, plans, pricing, various fees, designs, scheduling and delivery of homes without prior notice. All dimensions and square footages are approximate. Plan and dimensions may contain minor variations from floor to floor. CA DRE license no. 01877720. 🏠

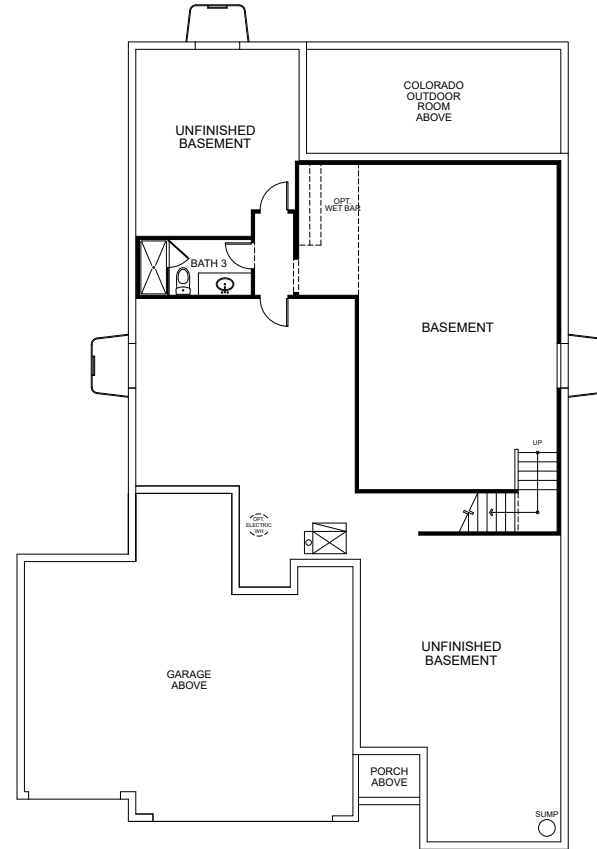
PLAN 1 - OPTIONS

3 - 4 Bedrooms • 2.5 - 3.5 Baths • 3-Car Garage
 Approx. 2,016 - 2,956 Finished Sq. Ft.

PRELIMINARY



BASEMENT OPTION 1



BASEMENT OPTION 2

Preliminary and subject to change.

970.450.5504 | KitchelLakeSales@trumarkco.com | 1554 Winter Glow Drive, Windsor, CO. 80550 | VIP-KITCHEL.COM

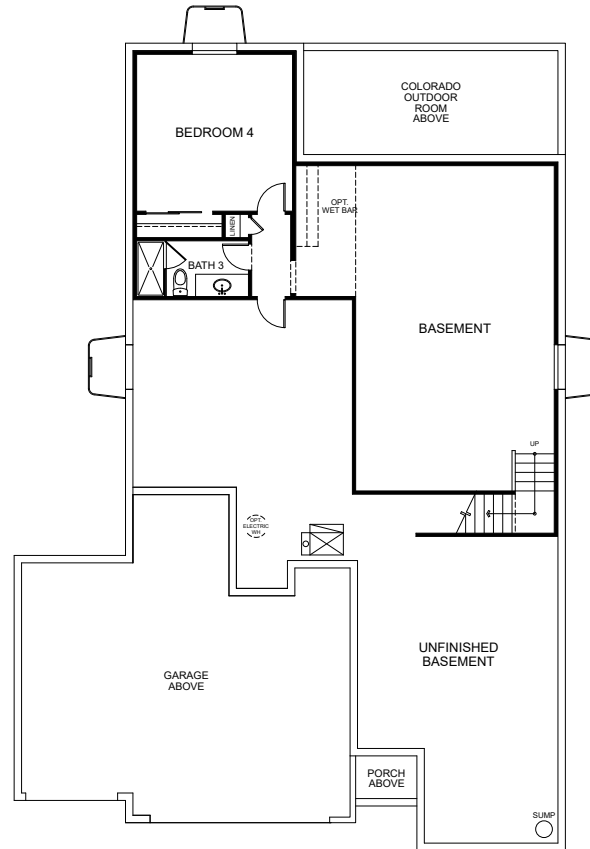
TRUMARK HOMES

All information is for reference only. Prices, taxes and specifications subject to change and should be verified by all potential homebuyers. This is not an offer to sell but is intended for information only. The developer reserves the right to make modifications in materials, specifications, plans, pricing, various fees, designs, scheduling and delivery of homes without prior notice. All dimensions and square footages are approximate. Plan and dimensions may contain minor variations from floor to floor. CA DRE license no. 01877720. 🏠

PLAN 1 - OPTIONS

3 - 4 Bedrooms • 2.5 - 3.5 Baths • 3-Car Garage
 Approx. 2,016 - 2,956 Finished Sq. Ft.

PRELIMINARY




BASEMENT OPTION 3

Preliminary and subject to change.

970.450.5504 | KitchelLakeSales@trumarkco.com | 1554 Winter Glow Drive, Windsor, CO. 80550 | VIP-KITCHEL.COM

TRUMARKHOMES

All information is for reference only. Prices, taxes and specifications subject to change and should be verified by all potential homebuyers. This is not an offer to sell but is intended for information only. The developer reserves the right to make modifications in materials, specifications, plans, pricing, various fees, designs, scheduling and delivery of homes without prior notice. All dimensions and square footages are approximate. Plan and dimensions may contain minor variations from floor to floor. CA DRE license no. 01877720. 

PLAN 2

3 - 4 Bedrooms • 2.5 - 3.5 Baths • 3-Car Garage
Approx. 2,228 - 3,184 Finished Sq. Ft.

PRELIMINARY



Elevation 2A - Modern Farmhouse



Elevation 2B - Modern Prairie




Elevation 2C - Modern Mountain

Preliminary and subject to change.

970.450.5504 | KitchelLakeSales@trumarkco.com | 1554 Winter Glow Drive, Windsor, CO. 80550 | VIP-KITCHEL.COM

TRUMARK HOMES

All information is for reference only. Prices, taxes and specifications subject to change and should be verified by all potential homebuyers. This is not an offer to sell but is intended for information only. The developer reserves the right to make modifications in materials, specifications, plans, pricing, various fees, designs, scheduling and delivery of homes without prior notice. All dimensions and square footages are approximate. Plan and dimensions may contain minor variations from floor to floor. CA DRE license no. 01877720. 

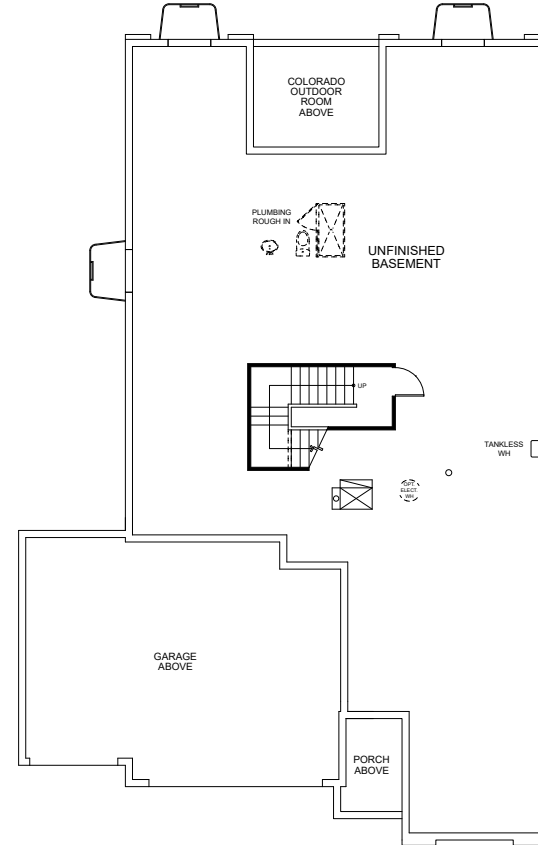
PLAN 2

3 - 4 Bedrooms • 2.5 - 3.5 Baths • 3-Car Garage
 Approx. 2,228 - 3,184 Finished Sq. Ft.

PRELIMINARY



FIRST FLOOR



BASEMENT

Preliminary and subject to change.

970.450.5504 | KitchelLakeSales@trumarkco.com | 1554 Winter Glow Drive, Windsor, CO. 80550 | VIP-KITCHEL.COM

TRUMARK HOMES

All information is for reference only. Prices, taxes and specifications subject to change and should be verified by all potential homebuyers. This is not an offer to sell but is intended for information only. The developer reserves the right to make modifications in materials, specifications, plans, pricing, various fees, designs, scheduling and delivery of homes without prior notice. All dimensions and square footages are approximate. Plan and dimensions may contain minor variations from floor to floor. CA DRE license no. 01877720. 🏠

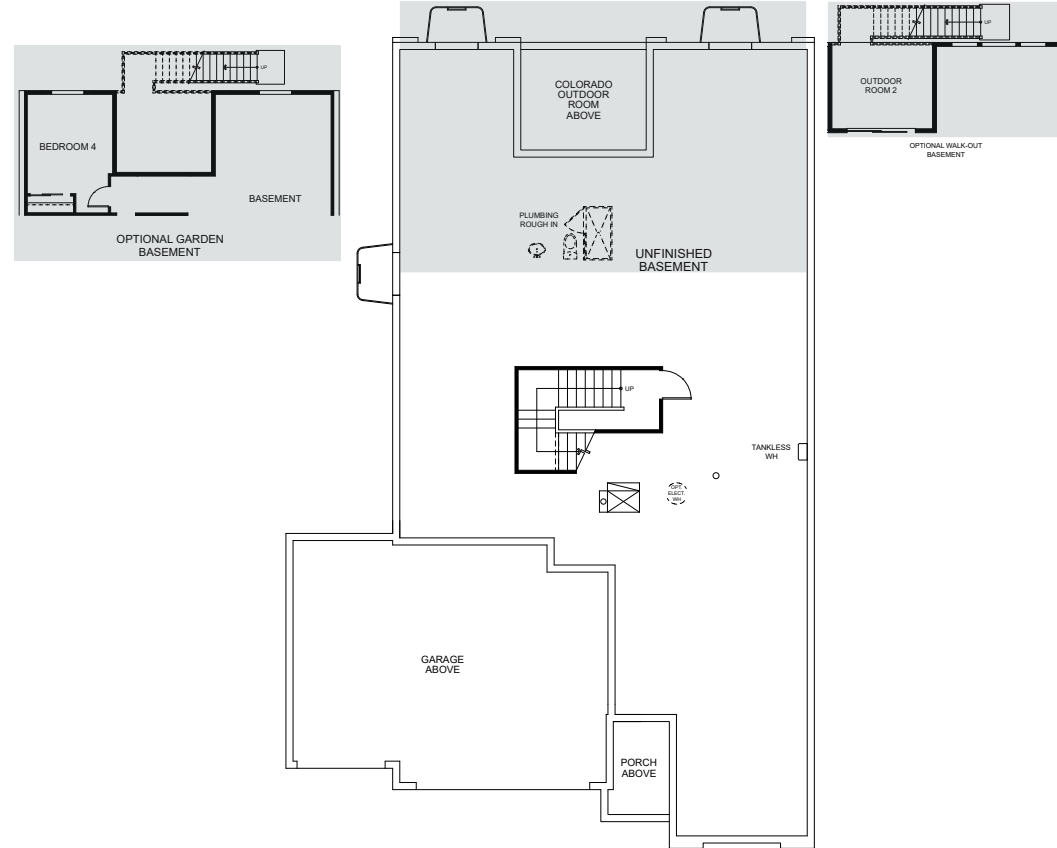
PLAN 2 - OPTIONS

3 - 4 Bedrooms • 2.5 - 3.5 Baths • 3-Car Garage
 Approx. 2,228 - 3,184 Finished Sq. Ft.

PRELIMINARY



FIRST FLOOR



BASEMENT

Preliminary and subject to change.

970.450.5504 | KitchelLakeSales@trumarkco.com | 1554 Winter Glow Drive, Windsor, CO. 80550 | VIP-KITCHEL.COM

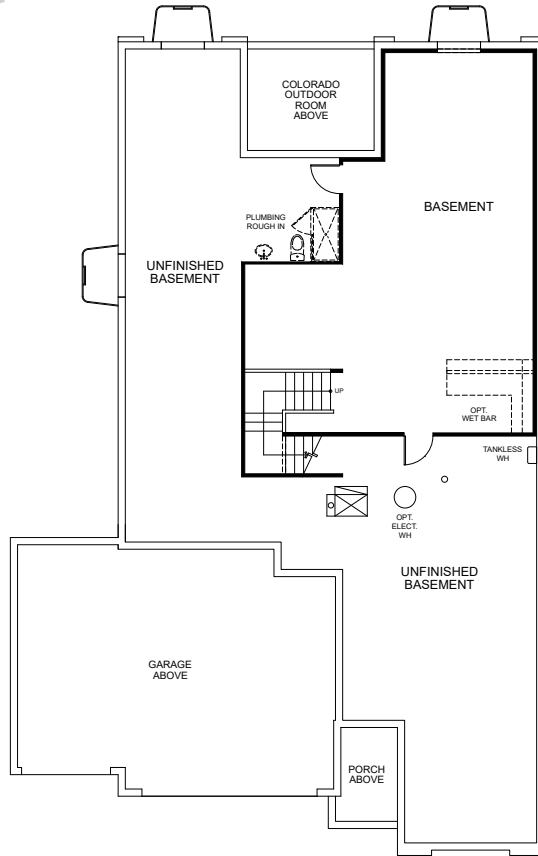
TRUMARK HOMES

All information is for reference only. Prices, taxes and specifications subject to change and should be verified by all potential homebuyers. This is not an offer to sell but is intended for information only. The developer reserves the right to make modifications in materials, specifications, plans, pricing, various fees, designs, scheduling and delivery of homes without prior notice. All dimensions and square footages are approximate. Plan and dimensions may contain minor variations from floor to floor. CA DRE license no. 01877720. 🏠

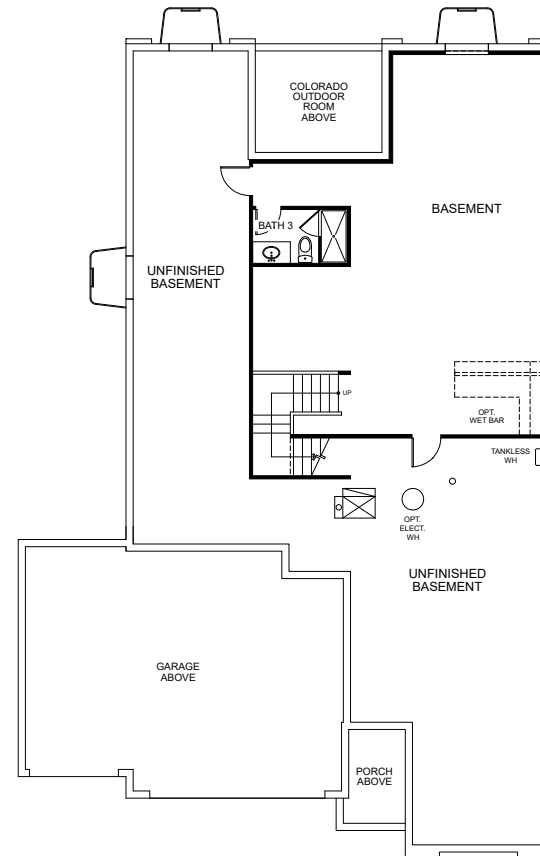
PLAN 2 - OPTIONS

3 - 4 Bedrooms • 2.5 - 3.5 Baths • 3-Car Garage
 Approx. 2,228 - 3,184 Finished Sq. Ft.

PRELIMINARY



BASEMENT OPTION 1



BASEMENT OPTION 2

Preliminary and subject to change.

970.450.5504 | KitchelLakeSales@trumarkco.com | 1554 Winter Glow Drive, Windsor, CO. 80550 | VIP-KITCHEL.COM

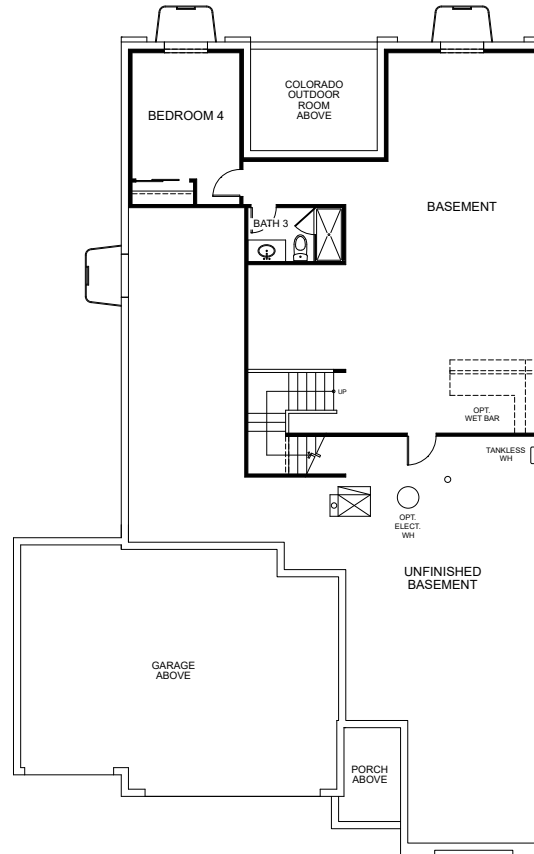
TRUMARK HOMES

All information is for reference only. Prices, taxes and specifications subject to change and should be verified by all potential homebuyers. This is not an offer to sell but is intended for information only. The developer reserves the right to make modifications in materials, specifications, plans, pricing, various fees, designs, scheduling and delivery of homes without prior notice. All dimensions and square footages are approximate. Plan and dimensions may contain minor variations from floor to floor. CA DRE license no. 01877720. 🏠

PLAN 2 - OPTIONS

3 - 4 Bedrooms • 2.5 - 3.5 Baths • 3-Car Garage
 Approx. 2,228 - 3,184 Finished Sq. Ft.

PRELIMINARY



BASEMENT OPTION 3

Preliminary and subject to change.

970.450.5504 | KitchelLakeSales@trumarkco.com | 1554 Winter Glow Drive, Windsor, CO. 80550 | VIP-KITCHEL.COM



All information is for reference only. Prices, taxes and specifications subject to change and should be verified by all potential homebuyers. This is not an offer to sell but is intended for information only. The developer reserves the right to make modifications in materials, specifications, plans, pricing, various fees, designs, scheduling and delivery of homes without prior notice. All dimensions and square footages are approximate. Plan and dimensions may contain minor variations from floor to floor. CA DRE license no. 01877720. 🏠

PLAN 3

4 - 6 Bedrooms • 3 - 4 Baths • 4-Car Garage (Tandem)
2,768 - 3,733 Finished Sq. Ft.

PRELIMINARY



Elevation 3A - Modern Farmhouse



Elevation 3B - Modern Prairie




Elevation 3C - Modern Mountain

Preliminary and subject to change.

970.450.5504 | KitchelLakeSales@trumarkco.com | 1554 Winter Glow Drive, Windsor, CO. 80550 | VIP-KITCHEL.COM

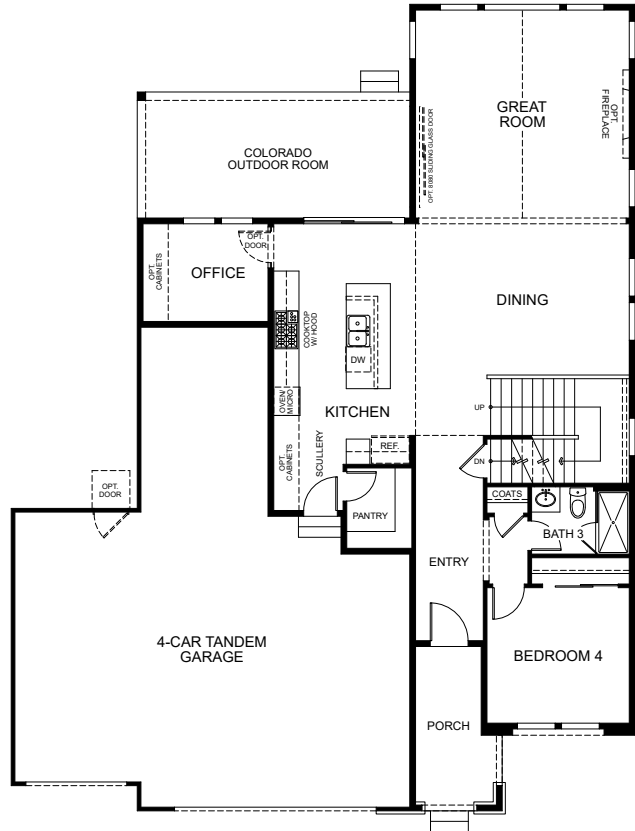
TRUMARK HOMES

All information is for reference only. Prices, taxes and specifications subject to change and should be verified by all potential homebuyers. This is not an offer to sell but is intended for information only. The developer reserves the right to make modifications in materials, specifications, plans, pricing, various fees, designs, scheduling and delivery of homes without prior notice. All dimensions and square footages are approximate. Plan and dimensions may contain minor variations from floor to floor. CA DRE license no. 01877720. 

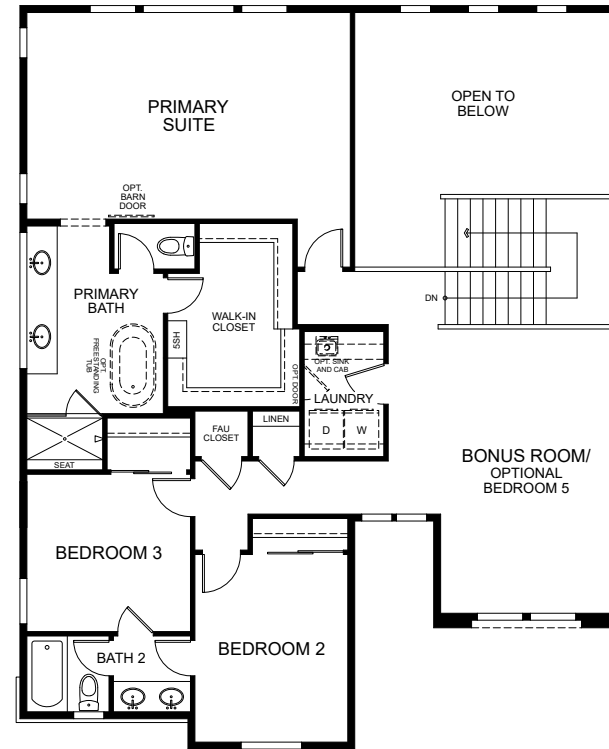
PLAN 3

4 - 6 Bedrooms • 3 - 4 Baths • 4-Car Garage (Tandem)
2,768 - 3,733 Finished Sq. Ft.

PRELIMINARY



FIRST FLOOR



SECOND FLOOR

Preliminary and subject to change.

970.450.5504 | KitchelLakeSales@trumarkco.com | 1554 Winter Glow Drive, Windsor, CO. 80550 | VIP-KITCHEL.COM

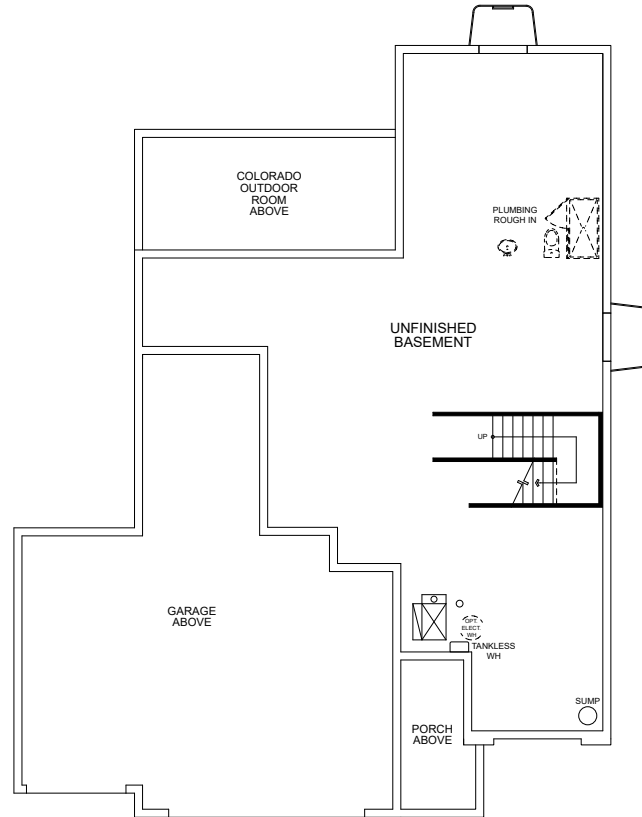
TRUMARK HOMES

All information is for reference only. Prices, taxes and specifications subject to change and should be verified by all potential homebuyers. This is not an offer to sell but is intended for information only. The developer reserves the right to make modifications in materials, specifications, plans, pricing, various fees, designs, scheduling and delivery of homes without prior notice. All dimensions and square footages are approximate. Plan and dimensions may contain minor variations from floor to floor. CA DRE license no. 01877720. 🏠

PLAN 3

4 - 6 Bedrooms • 3 - 4 Baths • 4-Car Garage (Tandem)
2,768 - 3,733 Finished Sq. Ft.

PRELIMINARY



BASEMENT

Preliminary and subject to change.

970.450.5504 | KitchelLakeSales@trumarkco.com | 1554 Winter Glow Drive, Windsor, CO. 80550 | VIP-KITCHEL.COM

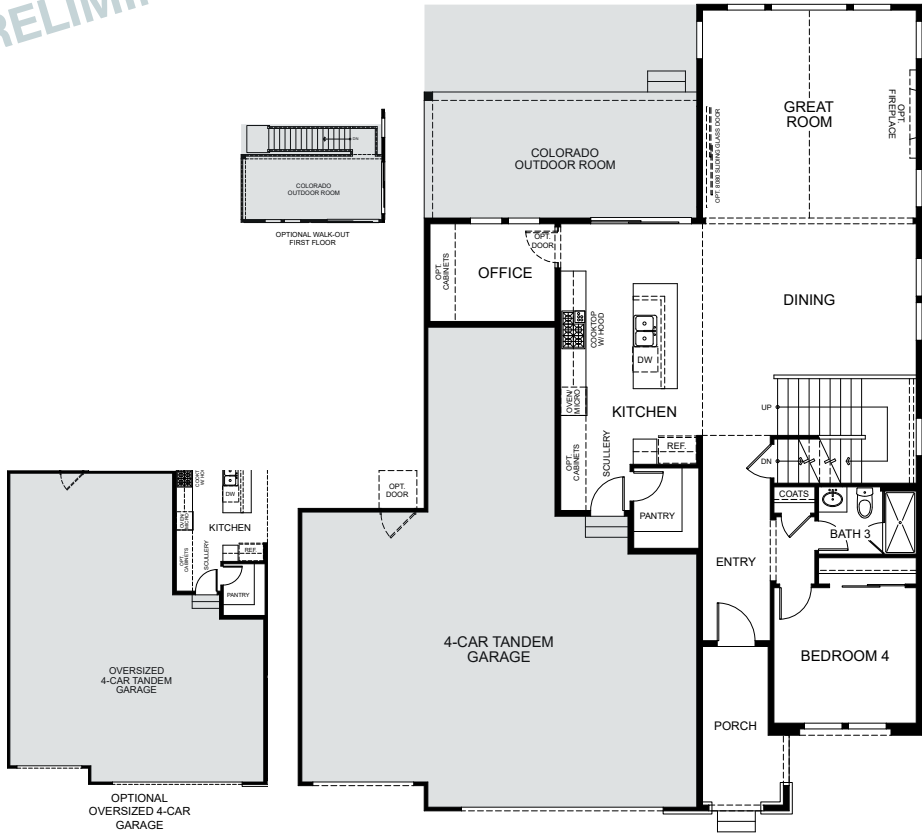
TRUMARK HOMES

All information is for reference only. Prices, taxes and specifications subject to change and should be verified by all potential homebuyers. This is not an offer to sell but is intended for information only. The developer reserves the right to make modifications in materials, specifications, plans, pricing, various fees, designs, scheduling and delivery of homes without prior notice. All dimensions and square footages are approximate. Plan and dimensions may contain minor variations from floor to floor. CA DRE license no. 01877720. 🏠

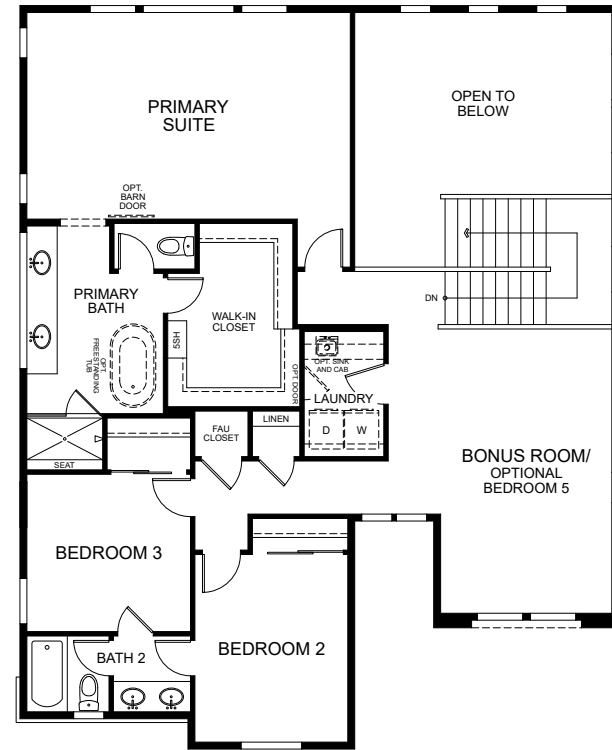
PLAN 3 - OPTIONS

4 - 6 Bedrooms • 3 - 4 Baths • 4-Car Garage (Tandem)
2,768 - 3,733 Finished Sq. Ft.

PRELIMINARY



FIRST FLOOR



SECOND FLOOR

Preliminary and subject to change.

970.450.5504 | KitchelLakeSales@trumarkco.com | 1554 Winter Glow Drive, Windsor, CO. 80550 | VIP-KITCHEL.COM

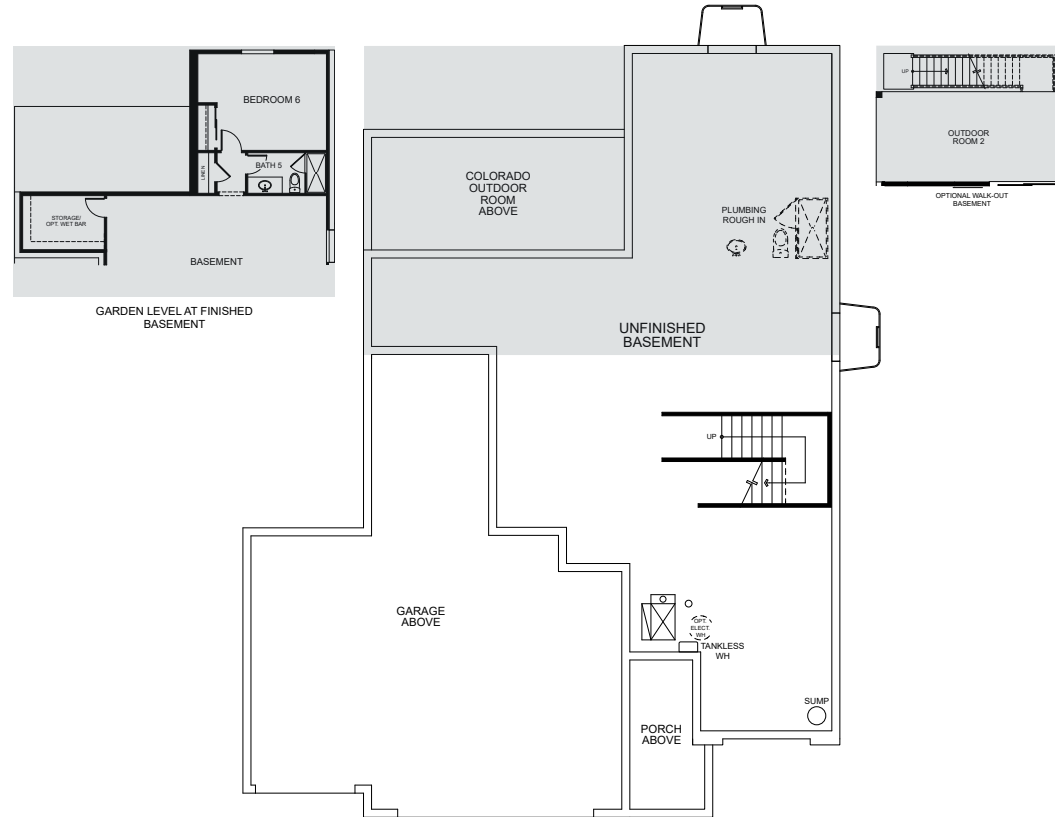
TRUMARK HOMES

All information is for reference only. Prices, taxes and specifications subject to change and should be verified by all potential homebuyers. This is not an offer to sell but is intended for information only. The developer reserves the right to make modifications in materials, specifications, plans, pricing, various fees, designs, scheduling and delivery of homes without prior notice. All dimensions and square footages are approximate. Plan and dimensions may contain minor variations from floor to floor. CA DRE license no. 01877720. 🏠

PLAN 3 - OPTIONS

4 - 6 Bedrooms • 3 - 4 Baths • 4-Car Garage (Tandem)
2,768 - 3,733 Finished Sq. Ft.

PRELIMINARY



BASEMENT

Preliminary and subject to change.

970.450.5504 | KitchelLakeSales@trumarkco.com | 1554 Winter Glow Drive, Windsor, CO. 80550 | VIP-KITCHEL.COM

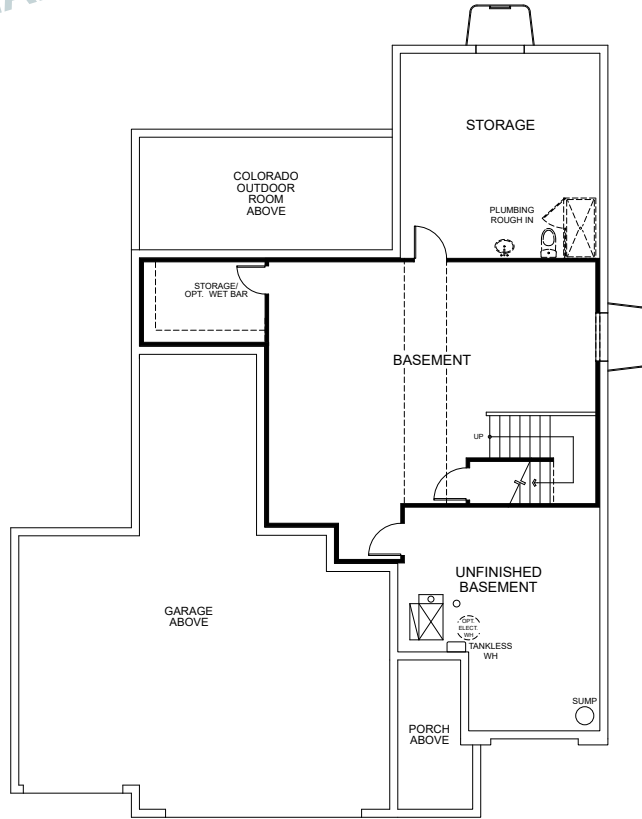
TRUMARK HOMES

All information is for reference only. Prices, taxes and specifications subject to change and should be verified by all potential homebuyers. This is not an offer to sell but is intended for information only. The developer reserves the right to make modifications in materials, specifications, plans, pricing, various fees, designs, scheduling and delivery of homes without prior notice. All dimensions and square footages are approximate. Plan and dimensions may contain minor variations from floor to floor. CA DRE license no. 01877720. 🏠

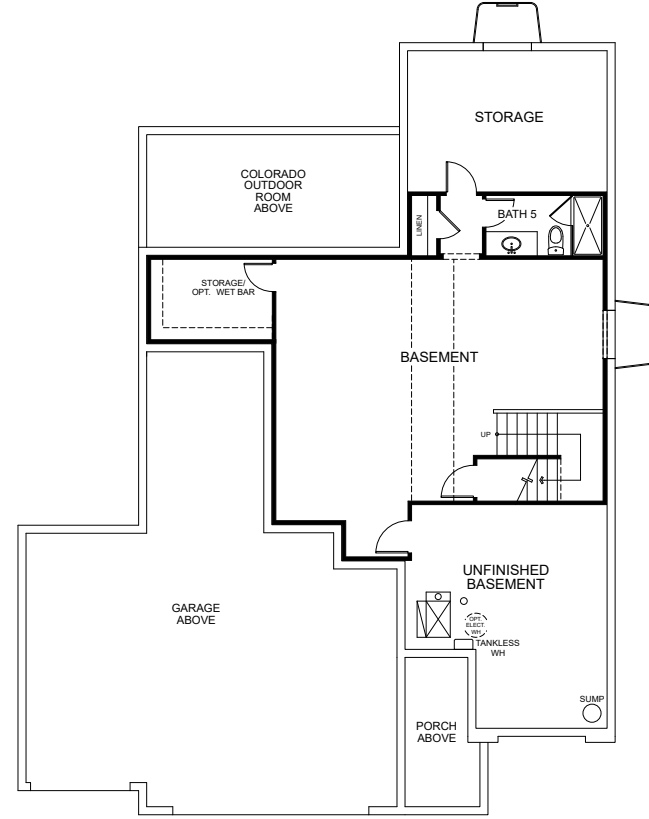
PLAN 3 - OPTIONS

4 - 6 Bedrooms • 3 - 4 Baths • 4-Car Garage (Tandem)
2,768 - 3,733 Finished Sq. Ft.

PRELIMINARY



BASEMENT OPTION 1



BASEMENT OPTION 2

Preliminary and subject to change.

970.450.5504 | KitchelLakeSales@trumarkco.com | 1554 Winter Glow Drive, Windsor, CO. 80550 | VIP-KITCHEL.COM

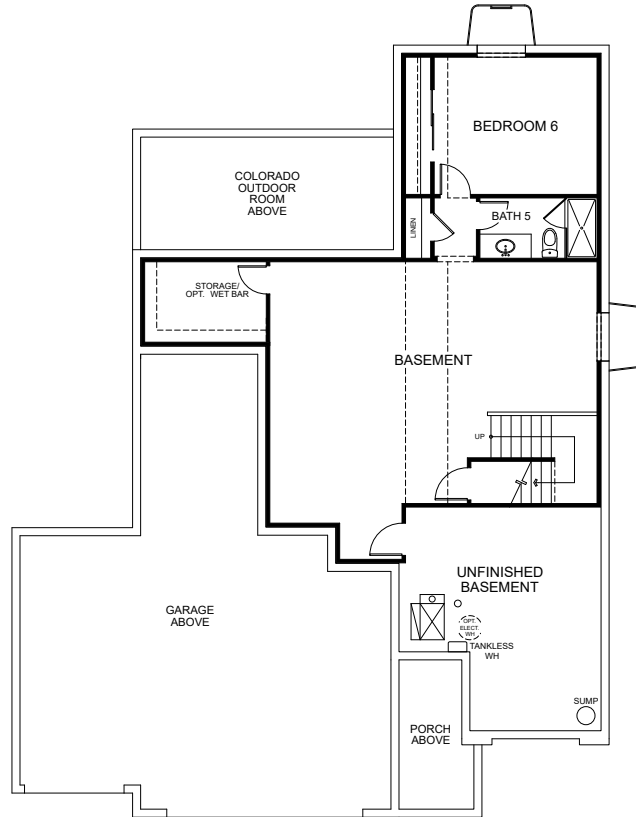
TRUMARK HOMES

All information is for reference only. Prices, taxes and specifications subject to change and should be verified by all potential homebuyers. This is not an offer to sell but is intended for information only. The developer reserves the right to make modifications in materials, specifications, plans, pricing, various fees, designs, scheduling and delivery of homes without prior notice. All dimensions and square footages are approximate. Plan and dimensions may contain minor variations from floor to floor. CA DRE license no. 01877720. 🏠

PLAN 3 - OPTIONS

4 - 6 Bedrooms • 3 - 4 Baths • 4-Car Garage (Tandem)
2,768 - 3,733 Finished Sq. Ft.

PRELIMINARY



BASEMENT OPTION 3

Preliminary and subject to change.

970.450.5504 | KitchelLakeSales@trumarkco.com | 1554 Winter Glow Drive, Windsor, CO. 80550 | VIP-KITCHEL.COM

TRUMARK HOMES

All information is for reference only. Prices, taxes and specifications subject to change and should be verified by all potential homebuyers. This is not an offer to sell but is intended for information only. The developer reserves the right to make modifications in materials, specifications, plans, pricing, various fees, designs, scheduling and delivery of homes without prior notice. All dimensions and square footages are approximate. Plan and dimensions may contain minor variations from floor to floor. CA DRE license no. 01877720. 🏠

PLAN 4

5 - 6 Bedrooms • 4 - 5 Baths • 4-Car Garage (Tandem)
Approx. 2,968 - 3,870 Finished Sq. Ft.

PRELIMINARY



Elevation 4A - Modern Farmhouse



Elevation 4B - Modern Prairie




Elevation 4C - Modern Mountain

Preliminary and subject to change.

970.450.5504 | KitchelLakeSales@trumarkco.com | 1554 Winter Glow Drive, Windsor, CO. 80550 | VIP-KITCHEL.COM

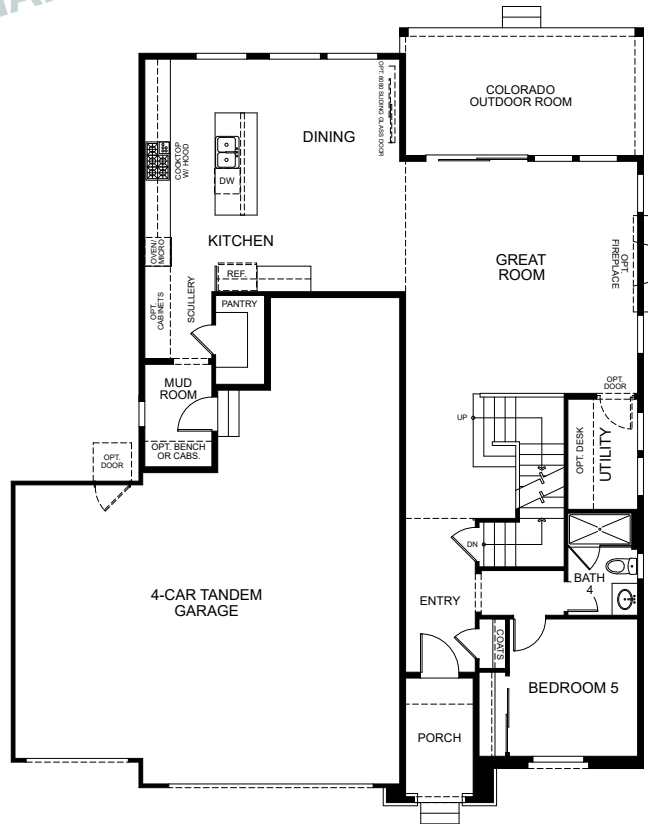
TRUMARK HOMES

All information is for reference only. Prices, taxes and specifications subject to change and should be verified by all potential homebuyers. This is not an offer to sell but is intended for information only. The developer reserves the right to make modifications in materials, specifications, plans, pricing, various fees, designs, scheduling and delivery of homes without prior notice. All dimensions and square footages are approximate. Plan and dimensions may contain minor variations from floor to floor. CA DRE license no. 01877720. 

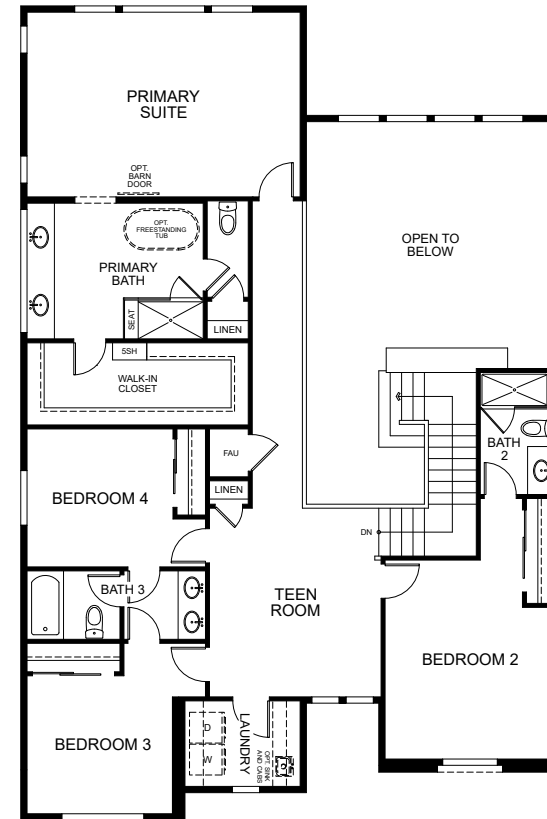
PLAN 4

5 - 6 Bedrooms • 4 - 5 Baths • 4-Car Garage (Tandem)
 Approx. 2,968 - 3,870 Finished Sq. Ft.

PRELIMINARY



FIRST FLOOR



SECOND FLOOR

Preliminary and subject to change.

970.450.5504 | KitchelLakeSales@trumarkco.com | 1554 Winter Glow Drive, Windsor, CO. 80550 | VIP-KITCHEL.COM

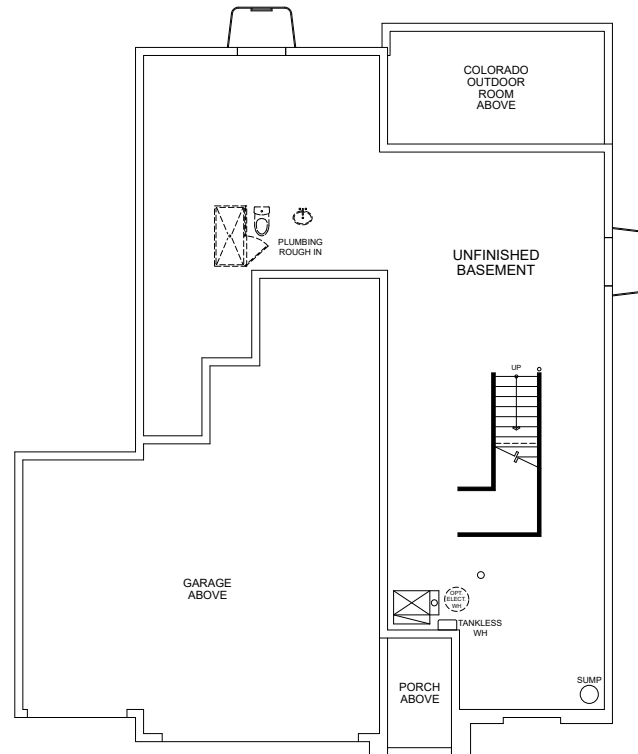
TRUMARK HOMES

All information is for reference only. Prices, taxes and specifications subject to change and should be verified by all potential homebuyers. This is not an offer to sell but is intended for information only. The developer reserves the right to make modifications in materials, specifications, plans, pricing, various fees, designs, scheduling and delivery of homes without prior notice. All dimensions and square footages are approximate. Plan and dimensions may contain minor variations from floor to floor. CA DRE license no. 01877720. 🏠

PLAN 4

5 - 6 Bedrooms • 4 - 5 Baths • 4-Car Garage (Tandem)
Approx. 2,968 - 3,870 Finished Sq. Ft.

PRELIMINARY



BASEMENT

Preliminary and subject to change.

970.450.5504 | KitchelLakeSales@trumarkco.com | 1554 Winter Glow Drive, Windsor, CO. 80550 | VIP-KITCHEL.COM

TRUMARK HOMES

All information is for reference only. Prices, taxes and specifications subject to change and should be verified by all potential homebuyers. This is not an offer to sell but is intended for information only. The developer reserves the right to make modifications in materials, specifications, plans, pricing, various fees, designs, scheduling and delivery of homes without prior notice. All dimensions and square footages are approximate. Plan and dimensions may contain minor variations from floor to floor. CA DRE license no. 01877720. 🏠

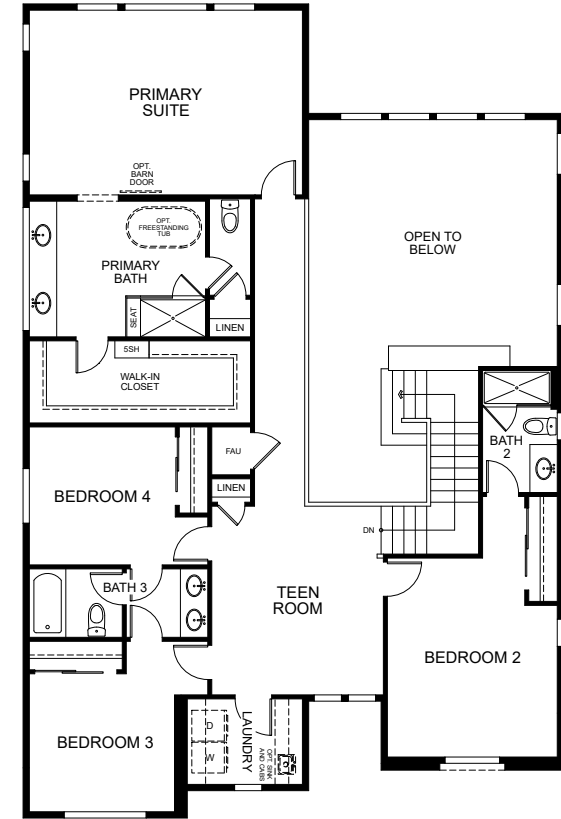
PLAN 4 - OPTIONS

5 - 6 Bedrooms • 4 - 5 Baths • 4-Car Garage (Tandem)
 Approx. 2,968 - 3,870 Finished Sq. Ft.

PRELIMINARY



FIRST FLOOR



SECOND FLOOR

Preliminary and subject to change.

970.450.5504 | KitchelLakeSales@trumarkco.com | 1554 Winter Glow Drive, Windsor, CO. 80550 | VIP-KITCHEL.COM

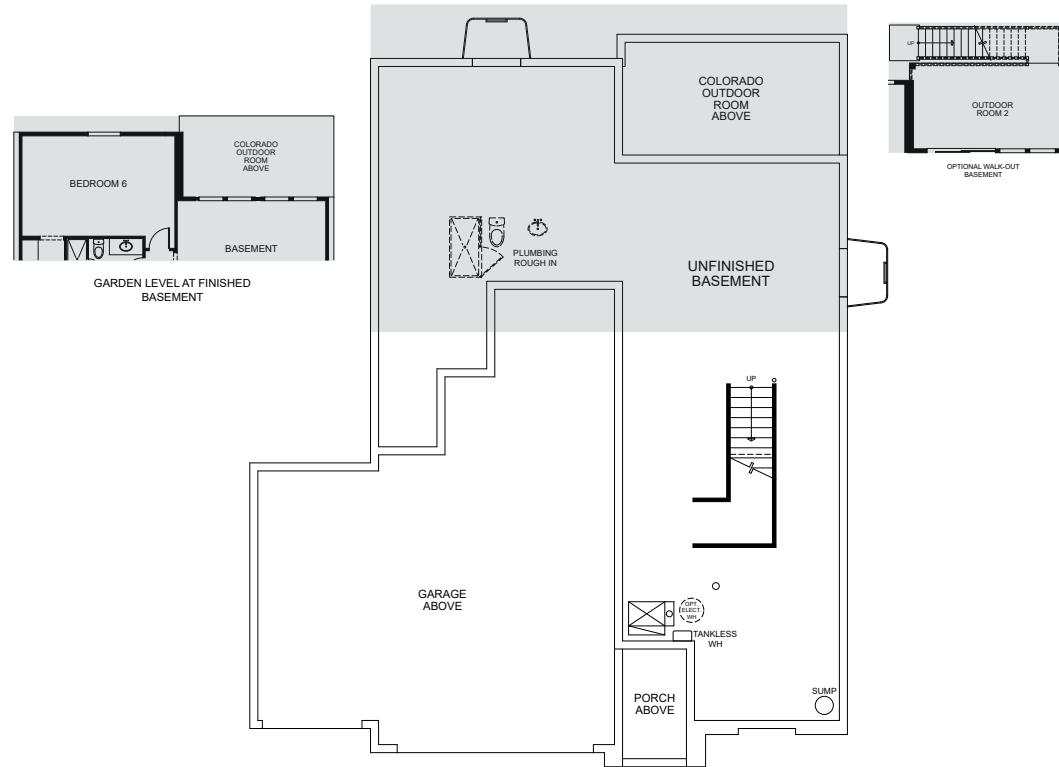


All information is for reference only. Prices, taxes and specifications subject to change and should be verified by all potential homebuyers. This is not an offer to sell but is intended for information only. The developer reserves the right to make modifications in materials, specifications, plans, pricing, various fees, designs, scheduling and delivery of homes without prior notice. All dimensions and square footages are approximate. Plan and dimensions may contain minor variations from floor to floor. CA DRE license no. 01877720. 🏠

PLAN 4 - OPTIONS

5 - 6 Bedrooms • 4 - 5 Baths • 4-Car Garage (Tandem)
 Approx. 2,968 - 3,870 Finished Sq. Ft.

PRELIMINARY



BASEMENT

Preliminary and subject to change.

970.450.5504 | KitchelLakeSales@trumarkco.com | 1554 Winter Glow Drive, Windsor, CO. 80550 | VIP-KITCHEL.COM

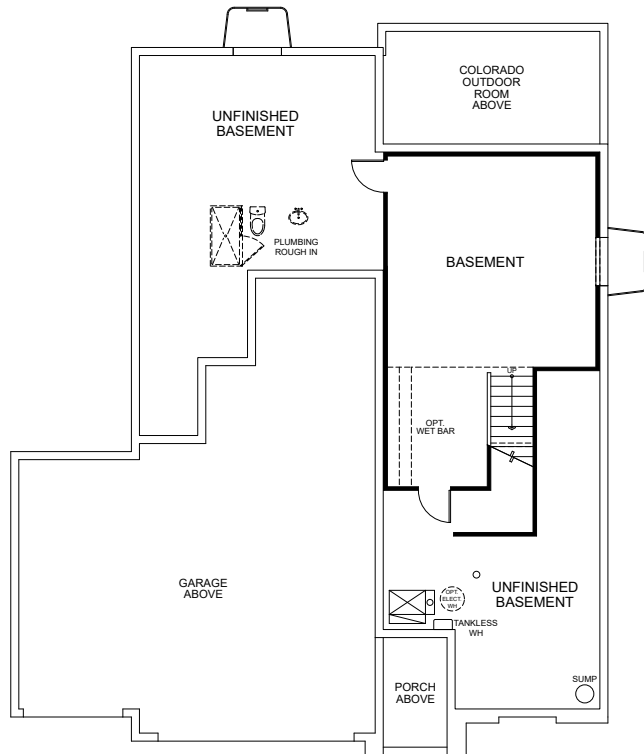
TRUMARK HOMES

All information is for reference only. Prices, taxes and specifications subject to change and should be verified by all potential homebuyers. This is not an offer to sell but is intended for information only. The developer reserves the right to make modifications in materials, specifications, plans, pricing, various fees, designs, scheduling and delivery of homes without prior notice. All dimensions and square footages are approximate. Plan and dimensions may contain minor variations from floor to floor. CA DRE license no. 01877720. 🏠

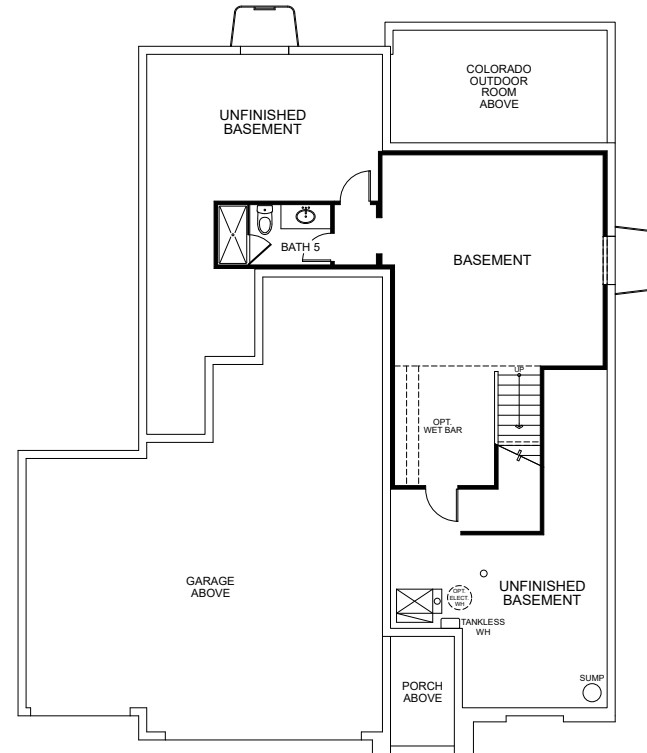
PLAN 4 - OPTIONS

5 - 6 Bedrooms • 4 - 5 Baths • 4-Car Garage (Tandem)
 Approx. 2,968 - 3,870 Finished Sq. Ft.

PRELIMINARY



BASEMENT OPTION 1



BASEMENT OPTION 2

Preliminary and subject to change.

970.450.5504 | KitchelLakeSales@trumarkco.com | 1554 Winter Glow Drive, Windsor, CO. 80550 | VIP-KITCHEL.COM

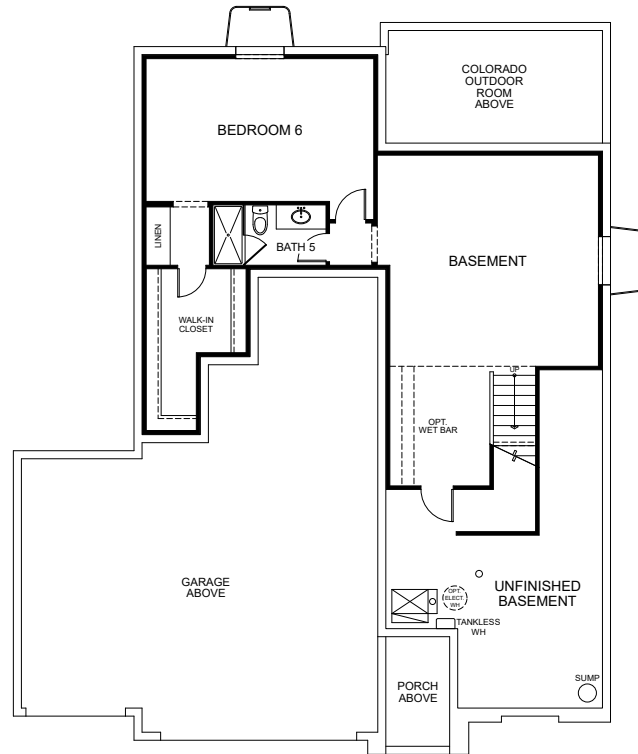
TRUMARK HOMES

All information is for reference only. Prices, taxes and specifications subject to change and should be verified by all potential homebuyers. This is not an offer to sell but is intended for information only. The developer reserves the right to make modifications in materials, specifications, plans, pricing, various fees, designs, scheduling and delivery of homes without prior notice. All dimensions and square footages are approximate. Plan and dimensions may contain minor variations from floor to floor. CA DRE license no. 01877720. 🏠

PLAN 4 - OPTIONS

5 - 6 Bedrooms • 4 - 5 Baths • 4-Car Garage (Tandem)
 Approx. 2,968 - 3,870 Finished Sq. Ft.

PRELIMINARY



BASEMENT OPTION 3

Preliminary and subject to change.

970.450.5504 | KitchelLakeSales@trumarkco.com | 1554 Winter Glow Drive, Windsor, CO. 80550 | VIP-KITCHEL.COM

TRUMARK HOMES

All information is for reference only. Prices, taxes and specifications subject to change and should be verified by all potential homebuyers. This is not an offer to sell but is intended for information only. The developer reserves the right to make modifications in materials, specifications, plans, pricing, various fees, designs, scheduling and delivery of homes without prior notice. All dimensions and square footages are approximate. Plan and dimensions may contain minor variations from floor to floor. CA DRE license no. 01877720. 🏠

PLAN 5

3 - 4 Bedrooms • 2.5 - 3.5 Baths • 3-Car Garage
Approx. 2,268 - 3,079 Finished Sq. Ft.

PRELIMINARY



Elevation 5A - Modern Farmhouse



Elevation 5B - Modern Prairie



Elevation 5C - Modern Mountain

Preliminary and subject to change.

970.450.5504 | KitchelLakeSales@trumarkco.com | 1554 Winter Glow Drive, Windsor, CO. 80550 | VIP-KITCHEL.COM

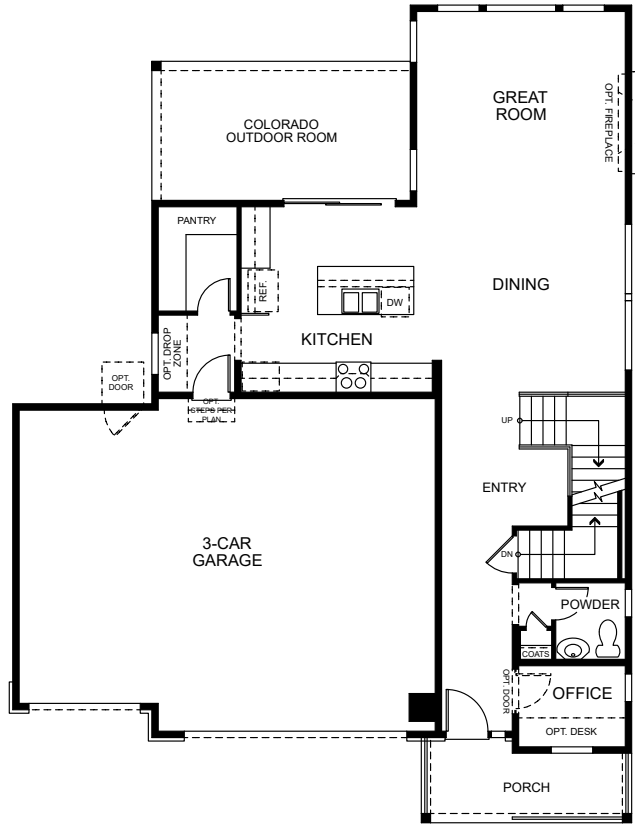
TRUMARK HOMES

All information is for reference only. Prices, taxes and specifications subject to change and should be verified by all potential homebuyers. This is not an offer to sell but is intended for information only. The developer reserves the right to make modifications in materials, specifications, plans, pricing, various fees, designs, scheduling and delivery of homes without prior notice. All dimensions and square footages are approximate. Plan and dimensions may contain minor variations from floor to floor. CA DRE license no. 01877720. 🏠

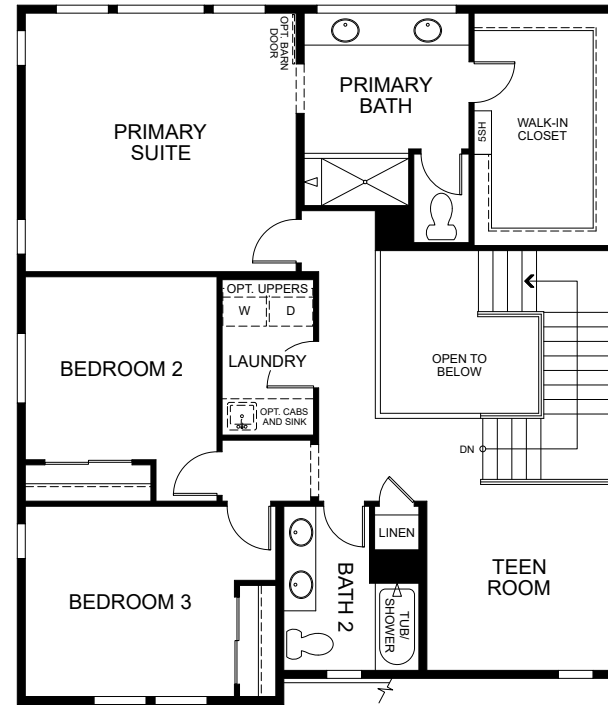
PLAN 5

3 - 4 Bedrooms • 2.5 - 3.5 Baths • 3-Car Garage
 Approx. 2,268 - 3,079 Finished Sq. Ft.

PRELIMINARY



FIRST FLOOR



SECOND FLOOR

Preliminary and subject to change.

970.450.5504 | KitchelLakeSales@trumarkco.com | 1554 Winter Glow Drive, Windsor, CO. 80550 | VIP-KITCHEL.COM

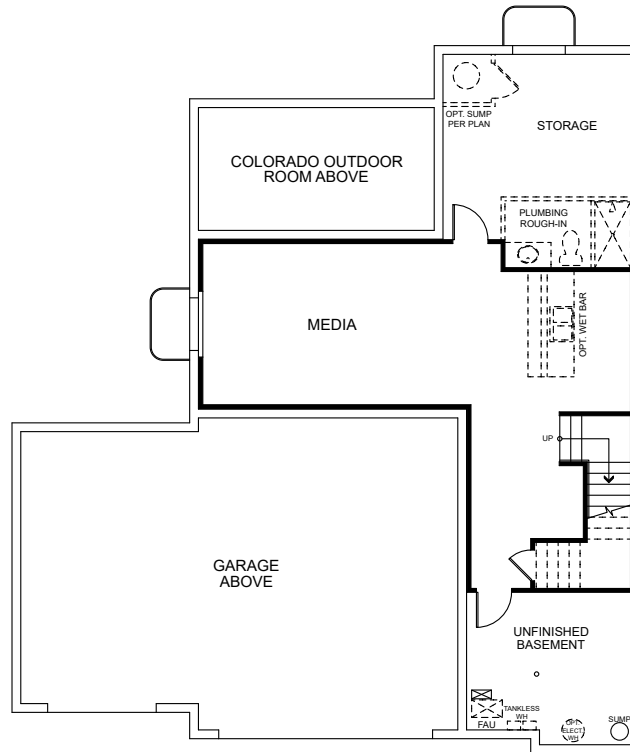
TRUMARK HOMES

All information is for reference only. Prices, taxes and specifications subject to change and should be verified by all potential homebuyers. This is not an offer to sell but is intended for information only. The developer reserves the right to make modifications in materials, specifications, plans, pricing, various fees, designs, scheduling and delivery of homes without prior notice. All dimensions and square footages are approximate. Plan and dimensions may contain minor variations from floor to floor. CA DRE license no. 01877720. 🏠

PLAN 5

3 – 4 Bedrooms • 2.5 – 3.5 Baths • 3-Car Garage
 Approx. 2,268 – 3,079 Finished Sq. Ft.

PRELIMINARY



BASEMENT

Preliminary and subject to change.

970.450.5504 | KitchelLakeSales@trumarkco.com | 1554 Winter Glow Drive, Windsor, CO. 80550 | VIP-KITCHEL.COM

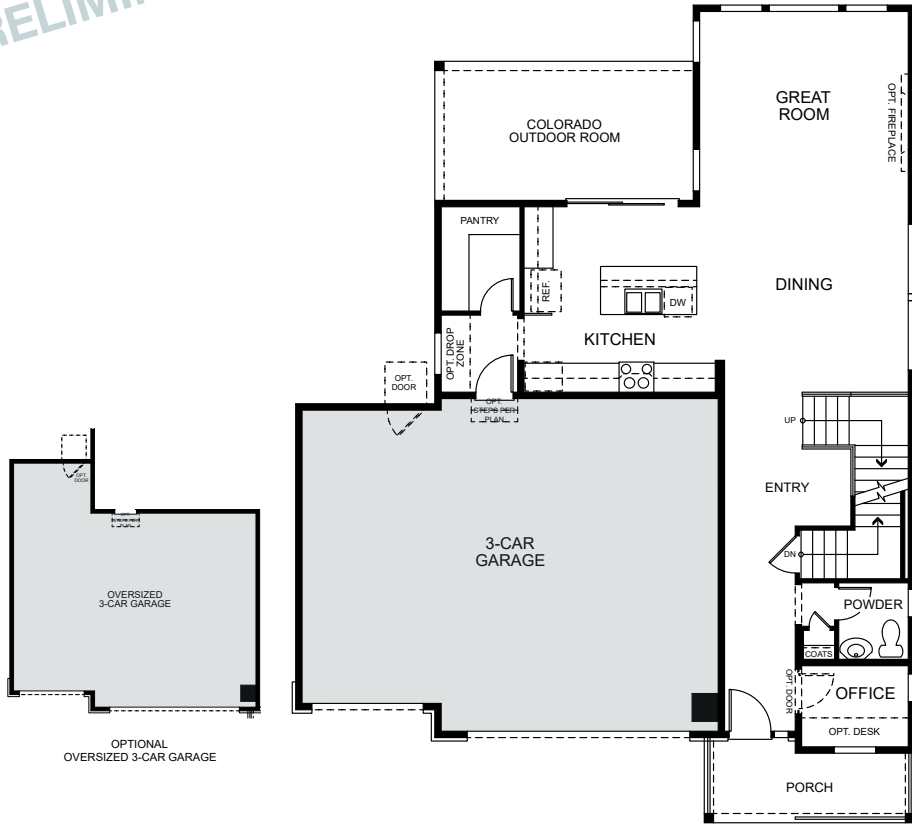
TRUMARK HOMES

All information is for reference only. Prices, taxes and specifications subject to change and should be verified by all potential homebuyers. This is not an offer to sell but is intended for information only. The developer reserves the right to make modifications in materials, specifications, plans, pricing, various fees, designs, scheduling and delivery of homes without prior notice. All dimensions and square footages are approximate. Plan and dimensions may contain minor variations from floor to floor. CA DRE license no. 01877720. 🏠

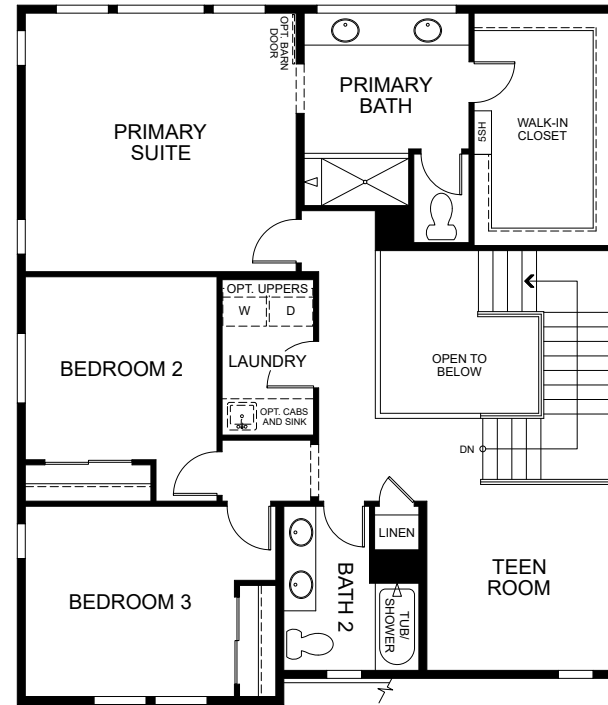
PLAN 5 - OPTIONS

3 - 4 Bedrooms • 2.5 - 3.5 Baths • 3-Car Garage
 Approx. 2,268 - 3,079 Finished Sq. Ft.

PRELIMINARY



FIRST FLOOR



SECOND FLOOR

Preliminary and subject to change.

970.450.5504 | KitchelLakeSales@trumarkco.com | 1554 Winter Glow Drive, Windsor, CO. 80550 | VIP-KITCHEL.COM

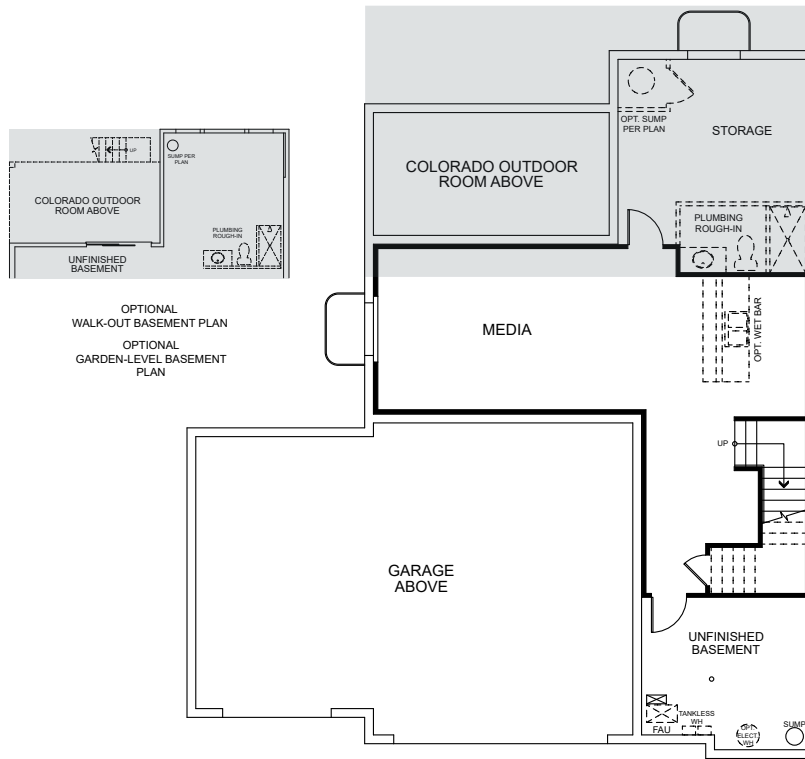
TRUMARK HOMES

All information is for reference only. Prices, taxes and specifications subject to change and should be verified by all potential homebuyers. This is not an offer to sell but is intended for information only. The developer reserves the right to make modifications in materials, specifications, plans, pricing, various fees, designs, scheduling and delivery of homes without prior notice. All dimensions and square footages are approximate. Plan and dimensions may contain minor variations from floor to floor. CA DRE license no. 01877720. 🏠

PLAN 5 - OPTIONS

3 - 4 Bedrooms • 2.5 - 3.5 Baths • 3-Car Garage
 Approx. 2,268 - 3,079 Finished Sq. Ft.

PRELIMINARY



BASEMENT

Preliminary and subject to change.

970.450.5504 | KitchelLakeSales@trumarkco.com | 1554 Winter Glow Drive, Windsor, CO. 80550 | VIP-KITCHEL.COM

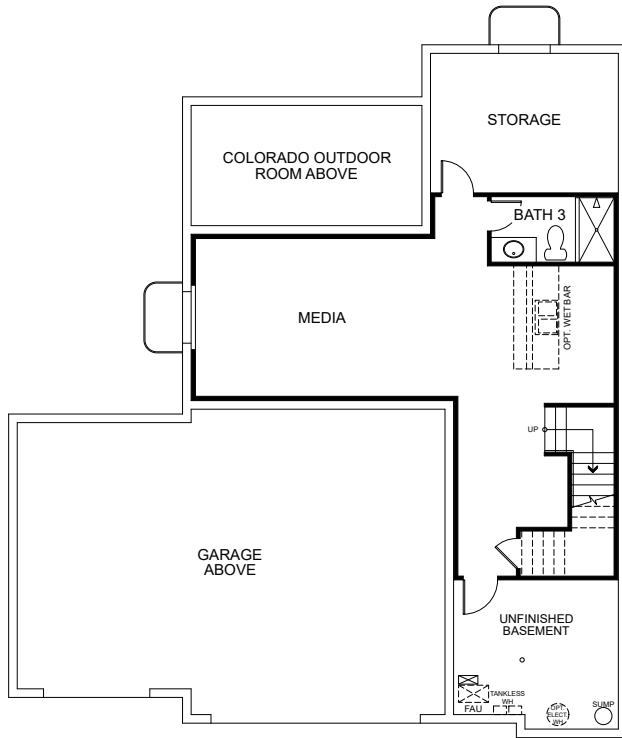
TRUMARK HOMES

All information is for reference only. Prices, taxes and specifications subject to change and should be verified by all potential homebuyers. This is not an offer to sell but is intended for information only. The developer reserves the right to make modifications in materials, specifications, plans, pricing, various fees, designs, scheduling and delivery of homes without prior notice. All dimensions and square footages are approximate. Plan and dimensions may contain minor variations from floor to floor. CA DRE license no. 01877720. 🏠

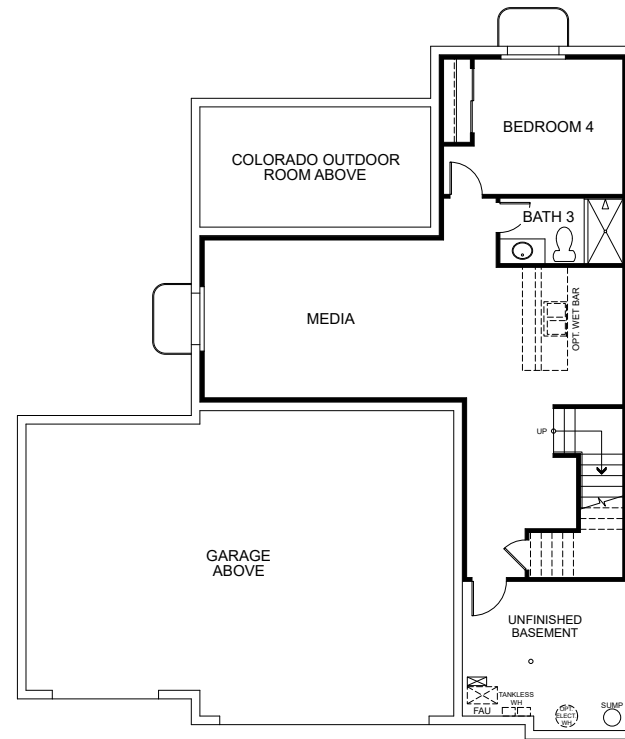
PLAN 5 - OPTIONS

3 - 4 Bedrooms • 2.5 - 3.5 Baths • 3-Car Garage
 Approx. 2,268 - 3,079 Finished Sq. Ft.

PRELIMINARY



BASEMENT OPTION 1



BASEMENT OPTION 2

Preliminary and subject to change.

970.450.5504 | KitchelLakeSales@trumarkco.com | 1554 Winter Glow Drive, Windsor, CO. 80550 | VIP-KITCHEL.COM

TRUMARK HOMES

All information is for reference only. Prices, taxes and specifications subject to change and should be verified by all potential homebuyers. This is not an offer to sell but is intended for information only. The developer reserves the right to make modifications in materials, specifications, plans, pricing, various fees, designs, scheduling and delivery of homes without prior notice. All dimensions and square footages are approximate. Plan and dimensions may contain minor variations from floor to floor. CA DRE license no. 01877720. 🏠

PLAN 6

4 - 5 Bedrooms • 3.5 - 4.5 Baths • 3-Car Garage
Approx. 2,491 - 3,427 Finished Sq. Ft.

PRELIMINARY



Elevation 6A - Modern Farmhouse



Elevation 6B - Modern Prairie



Elevation 6C - Modern Mountain

Preliminary and subject to change.

970.450.5504 | KitchelLakeSales@trumarkco.com | 1554 Winter Glow Drive, Windsor, CO. 80550 | VIP-KITCHEL.COM

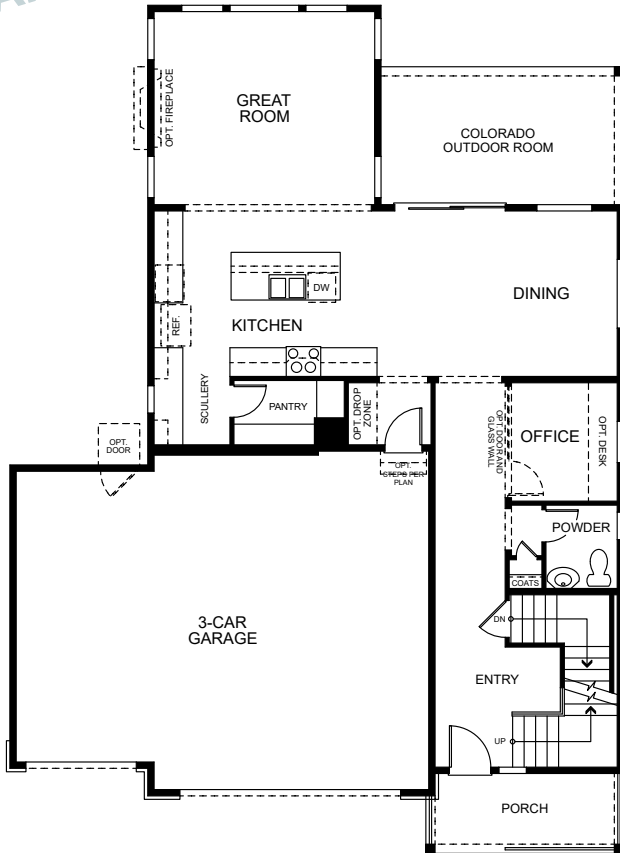
TRUMARK HOMES

All information is for reference only. Prices, taxes and specifications subject to change and should be verified by all potential homebuyers. This is not an offer to sell but is intended for information only. The developer reserves the right to make modifications in materials, specifications, plans, pricing, various fees, designs, scheduling and delivery of homes without prior notice. All dimensions and square footages are approximate. Plan and dimensions may contain minor variations from floor to floor. CA DRE license no. 01877720. 🏠

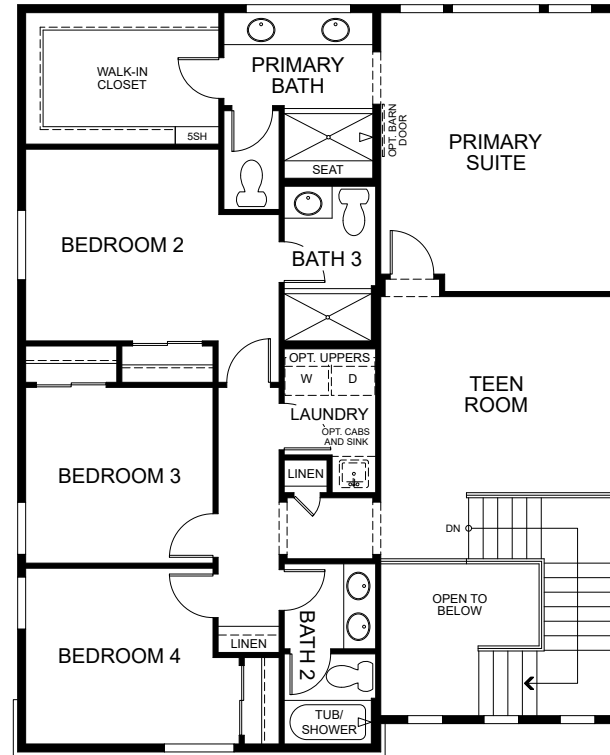
PLAN 6

4 - 5 Bedrooms • 3.5 - 4.5 Baths • 3-Car Garage
 Approx. 2,491 - 3,427 Finished Sq. Ft.

PRELIMINARY



FIRST FLOOR



SECOND FLOOR

Preliminary and subject to change.

970.450.5504 | KitchelLakeSales@trumarkco.com | 1554 Winter Glow Drive, Windsor, CO. 80550 | VIP-KITCHEL.COM

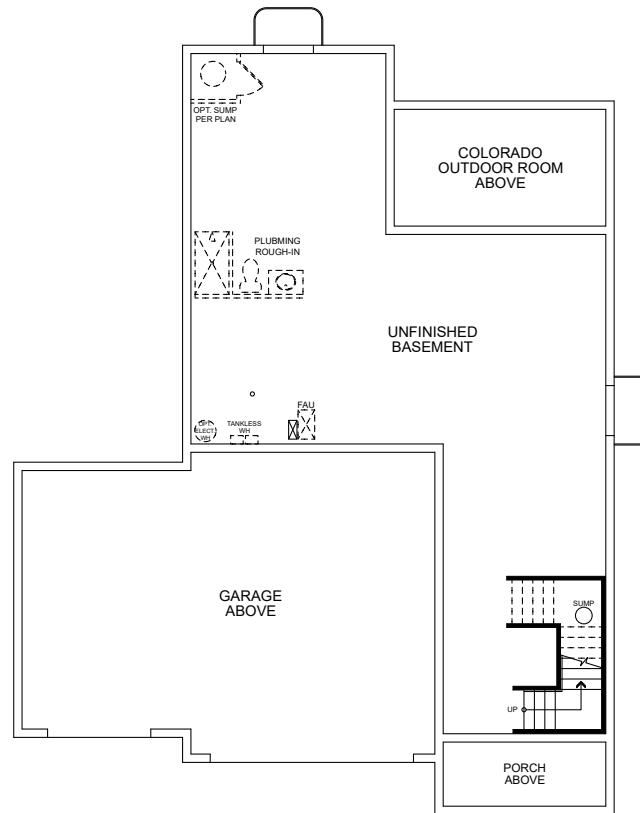
TRUMARK HOMES

All information is for reference only. Prices, taxes and specifications subject to change and should be verified by all potential homebuyers. This is not an offer to sell but is intended for information only. The developer reserves the right to make modifications in materials, specifications, plans, pricing, various fees, designs, scheduling and delivery of homes without prior notice. All dimensions and square footages are approximate. Plan and dimensions may contain minor variations from floor to floor. CA DRE license no. 01877720. 🏠

PLAN 6

4 - 5 Bedrooms • 3.5 - 4.5 Baths • 3-Car Garage
Approx. 2,491 - 3,427 Finished Sq. Ft.

PRELIMINARY



BASEMENT

Preliminary and subject to change.

970.450.5504 | KitchelLakeSales@trumarkco.com | 1554 Winter Glow Drive, Windsor, CO. 80550 | VIP-KITCHEL.COM

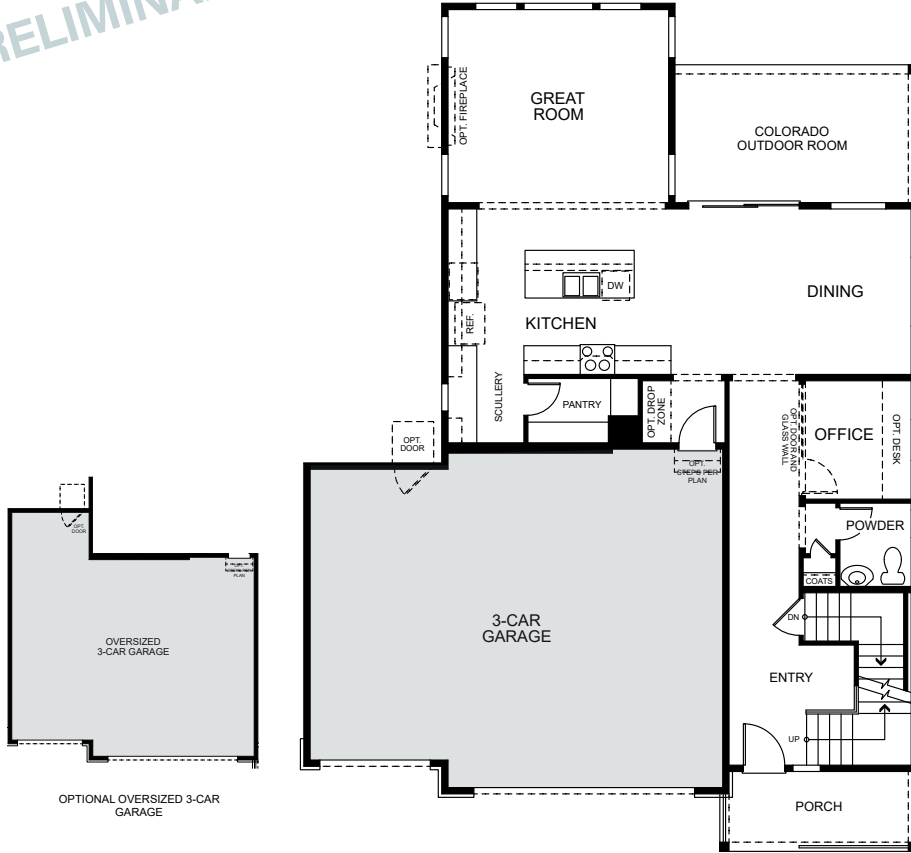
TRUMARK HOMES

All information is for reference only. Prices, taxes and specifications subject to change and should be verified by all potential homebuyers. This is not an offer to sell but is intended for information only. The developer reserves the right to make modifications in materials, specifications, plans, pricing, various fees, designs, scheduling and delivery of homes without prior notice. All dimensions and square footages are approximate. Plan and dimensions may contain minor variations from floor to floor. CA DRE license no. 01877720. 🏠

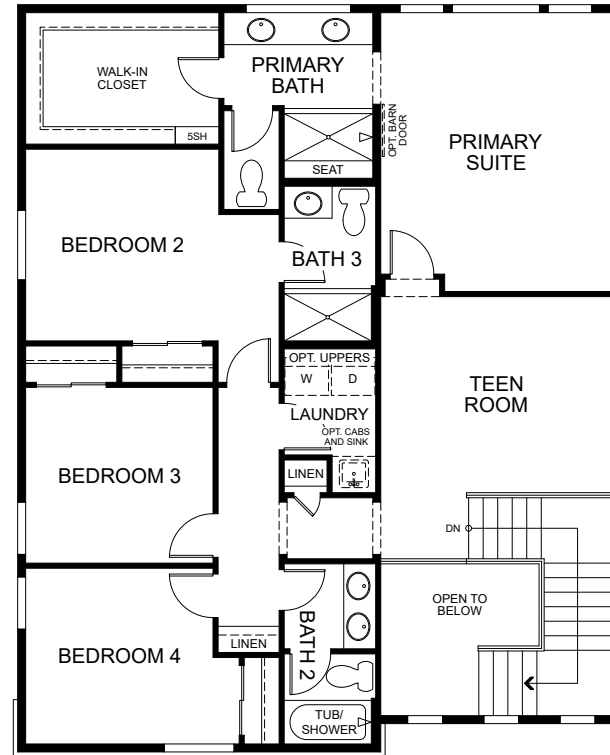
PLAN 6 - OPTIONS

4 - 5 Bedrooms • 3.5 - 4.5 Baths • 3-Car Garage
 Approx. 2,491 - 3,427 Finished Sq. Ft.

PRELIMINARY



FIRST FLOOR



SECOND FLOOR

Preliminary and subject to change.

970.450.5504 | KitchelLakeSales@trumarkco.com | 1554 Winter Glow Drive, Windsor, CO. 80550 | VIP-KITCHEL.COM

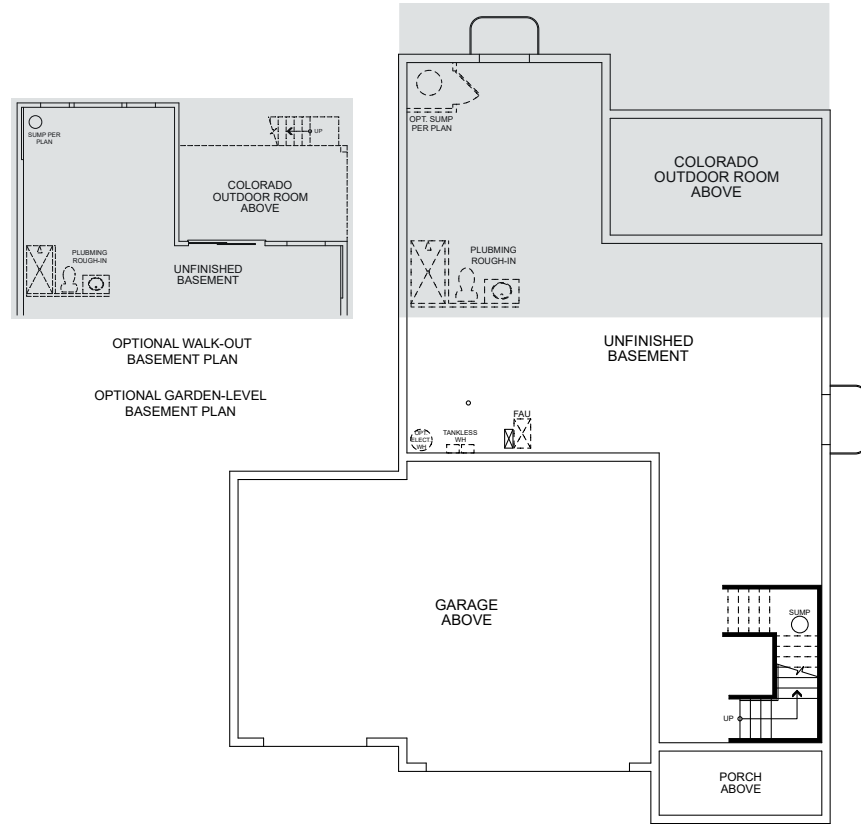
TRUMARK HOMES

All information is for reference only. Prices, taxes and specifications subject to change and should be verified by all potential homebuyers. This is not an offer to sell but is intended for information only. The developer reserves the right to make modifications in materials, specifications, plans, pricing, various fees, designs, scheduling and delivery of homes without prior notice. All dimensions and square footages are approximate. Plan and dimensions may contain minor variations from floor to floor. CA DRE license no. 01877720. 🏠

PLAN 6 - OPTIONS

4 - 5 Bedrooms • 3.5 - 4.5 Baths • 3-Car Garage
 Approx. 2,491 - 3,427 Finished Sq. Ft.

PRELIMINARY



BASEMENT

Preliminary and subject to change.

970.450.5504 | KitchelLakeSales@trumarkco.com | 1554 Winter Glow Drive, Windsor, CO. 80550 | VIP-KITCHEL.COM

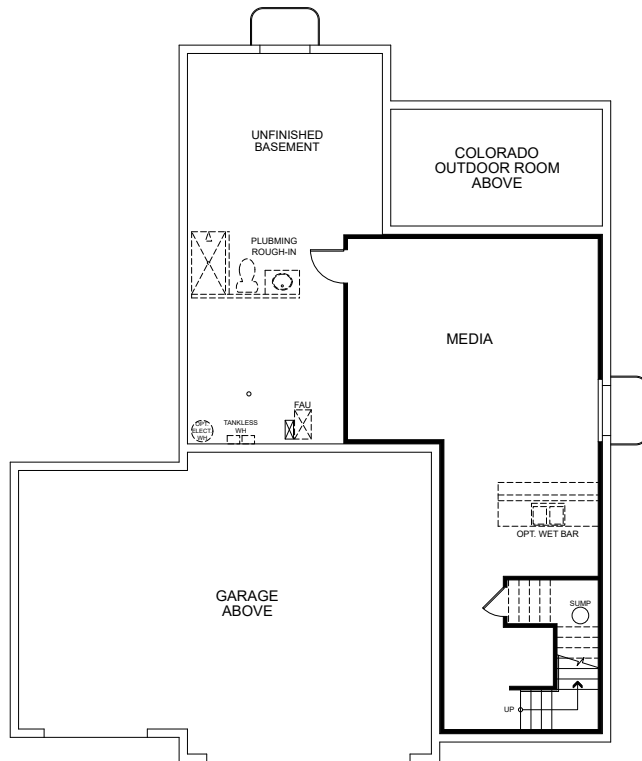
TRUMARK HOMES

All information is for reference only. Prices, taxes and specifications subject to change and should be verified by all potential homebuyers. This is not an offer to sell but is intended for information only. The developer reserves the right to make modifications in materials, specifications, plans, pricing, various fees, designs, scheduling and delivery of homes without prior notice. All dimensions and square footages are approximate. Plan and dimensions may contain minor variations from floor to floor. CA DRE license no. 01877720. 🏠

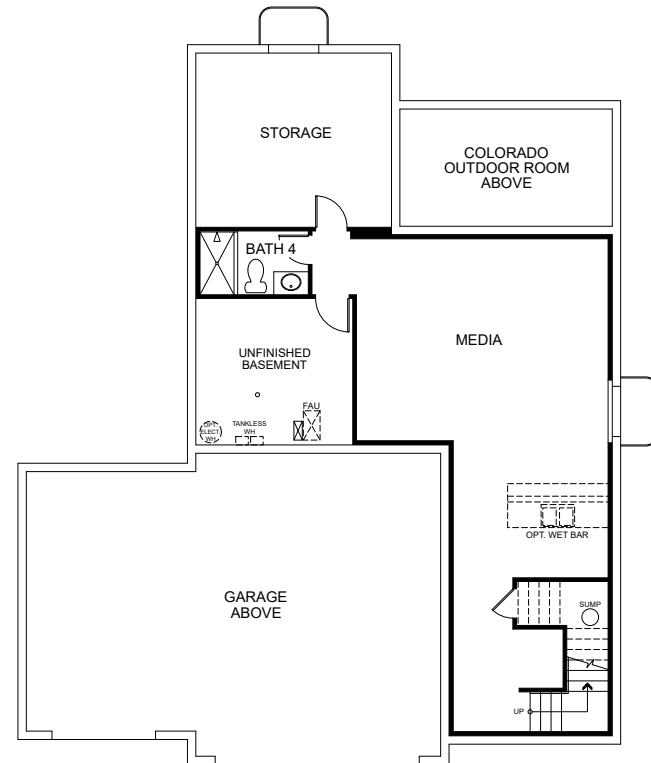
PLAN 6 - OPTIONS

4 - 5 Bedrooms • 3.5 - 4.5 Baths • 3-Car Garage
 Approx. 2,491 - 3,427 Finished Sq. Ft.

PRELIMINARY



BASEMENT OPTION 1



BASEMENT OPTION 2

Preliminary and subject to change.

970.450.5504 | KitchelLakeSales@trumarkco.com | 1554 Winter Glow Drive, Windsor, CO. 80550 | VIP-KITCHEL.COM

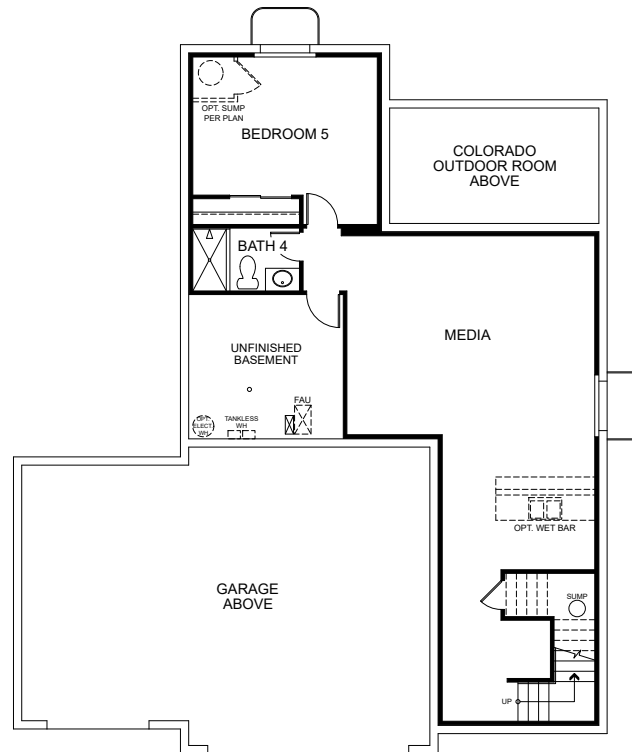
TRUMARK HOMES

All information is for reference only. Prices, taxes and specifications subject to change and should be verified by all potential homebuyers. This is not an offer to sell but is intended for information only. The developer reserves the right to make modifications in materials, specifications, plans, pricing, various fees, designs, scheduling and delivery of homes without prior notice. All dimensions and square footages are approximate. Plan and dimensions may contain minor variations from floor to floor. CA DRE license no. 01877720. 🏠

PLAN 6 - OPTIONS

4 - 5 Bedrooms • 3.5 - 4.5 Baths • 3-Car Garage
 Approx. 2,491 - 3,427 Finished Sq. Ft.

PRELIMINARY



BASEMENT OPTION 3

Preliminary and subject to change.

970.450.5504 | KitchelLakeSales@trumarkco.com | 1554 Winter Glow Drive, Windsor, CO. 80550 | VIP-KITCHEL.COM

TRUMARK HOMES

All information is for reference only. Prices, taxes and specifications subject to change and should be verified by all potential homebuyers. This is not an offer to sell but is intended for information only. The developer reserves the right to make modifications in materials, specifications, plans, pricing, various fees, designs, scheduling and delivery of homes without prior notice. All dimensions and square footages are approximate. Plan and dimensions may contain minor variations from floor to floor. CA DRE license no. 01877720. 🏠